

EUGENE SCOURBOUTIS / PORTFOLIO SELECTION / **AUG 2022**

**Title:** Prisma Thermal Collector PATENT NO: 20120100313 Co- Inventor, EUROPEAN REGISTERED DESIGN NO'S: 20120600063, 20120600064

**Organisation:** Calpak

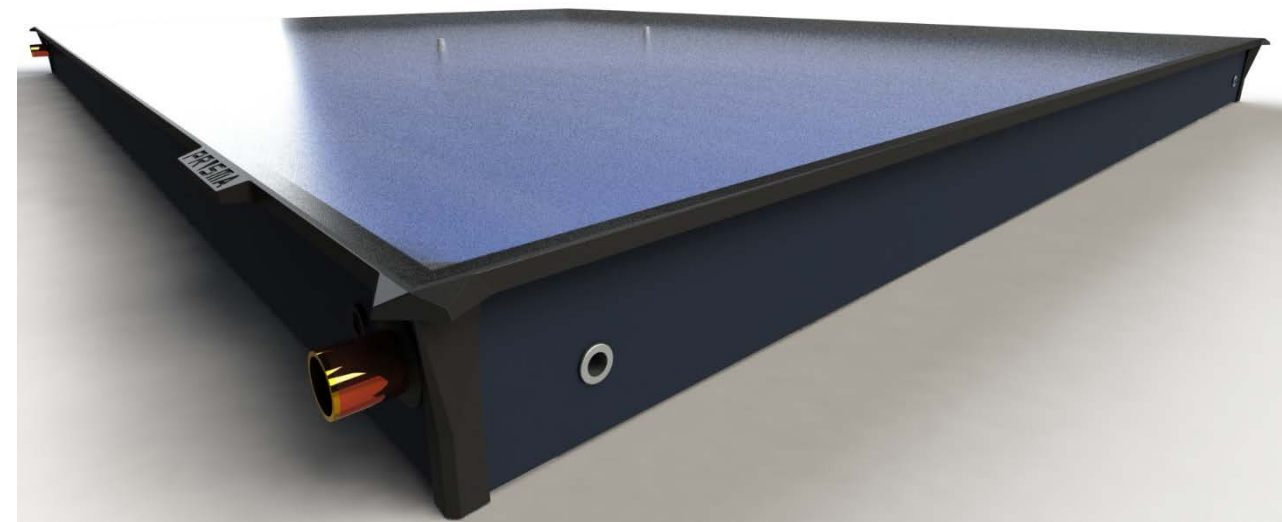
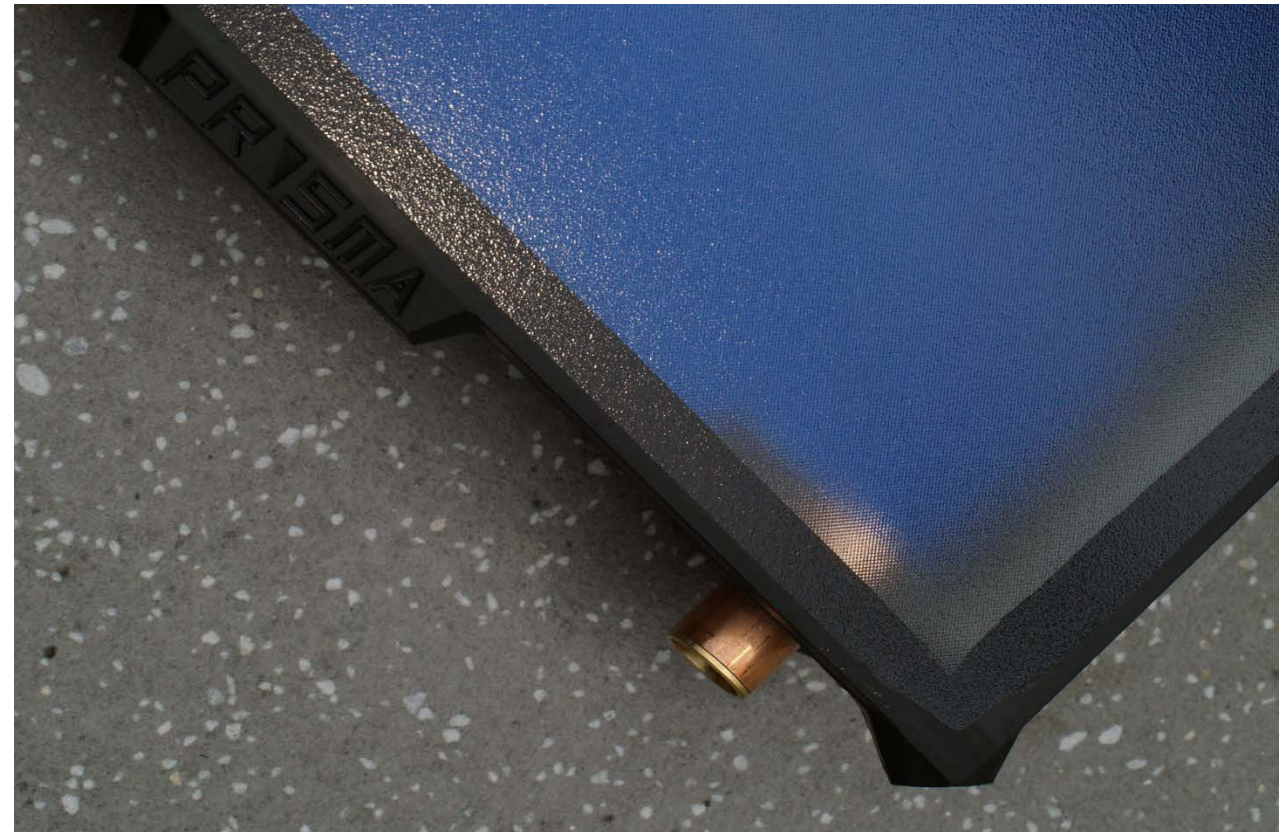
**Type:** Research and Development, New Product Development

**Date/Place:** 2007 – present, Athens-Corinth

**Field:** Product design and development, ergonomics, CAD, detail design, production design, renewable energy.



reddot winner 2022





**Title:** Design of a Modular Platform for an Ultra-Light electric Motorbike for Urban Commuting and Recreation.

**Organisation:** Department of Products and Systems Design Engineering, University of the Aegean

**Type:** PhD Research

**Date/Place:** 2018 – present, Syros-Athens

**Field:** Product design and development, mechanical analysis, simulation, ergonomics, CAD, CAE, renewable energy, electric mobility.

**From left to right:** Electric ultralight motorcycle preliminary designs. Conventional space-frame chassis design, motor and battery unit as stressed member, motor and battery separate units as a stressed reconfigurable assembly.





**Title:** Design of a Modular Platform for an Ultra-Light electric Motorbike for Urban Commuting and Recreation.

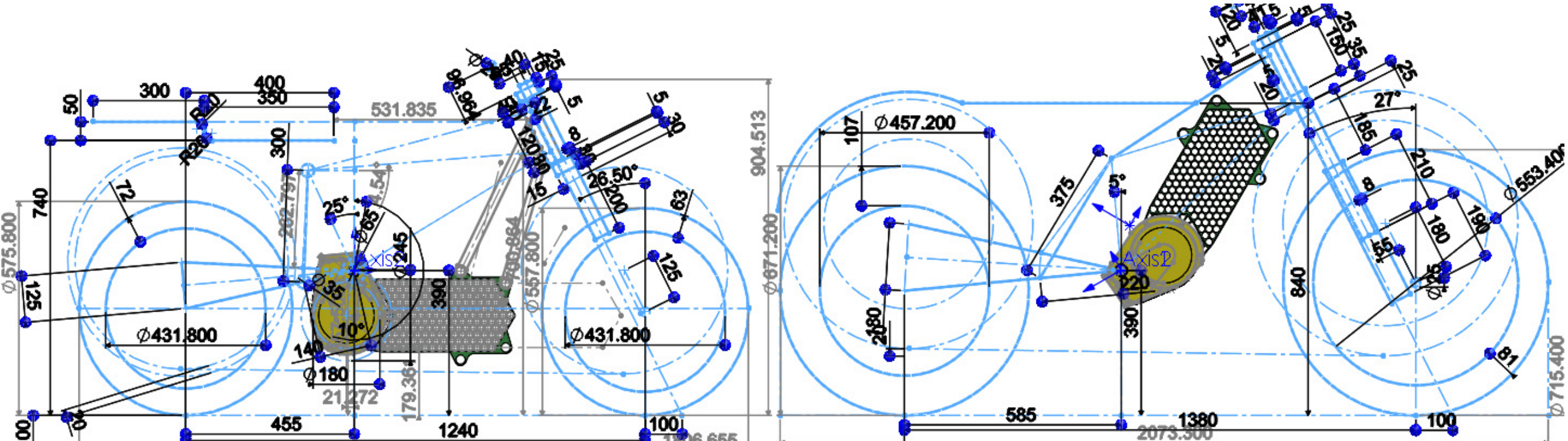
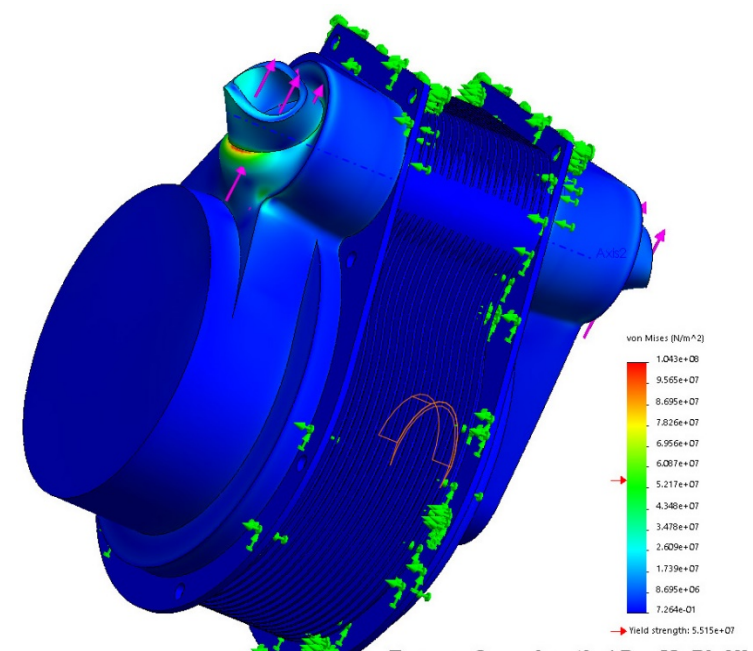
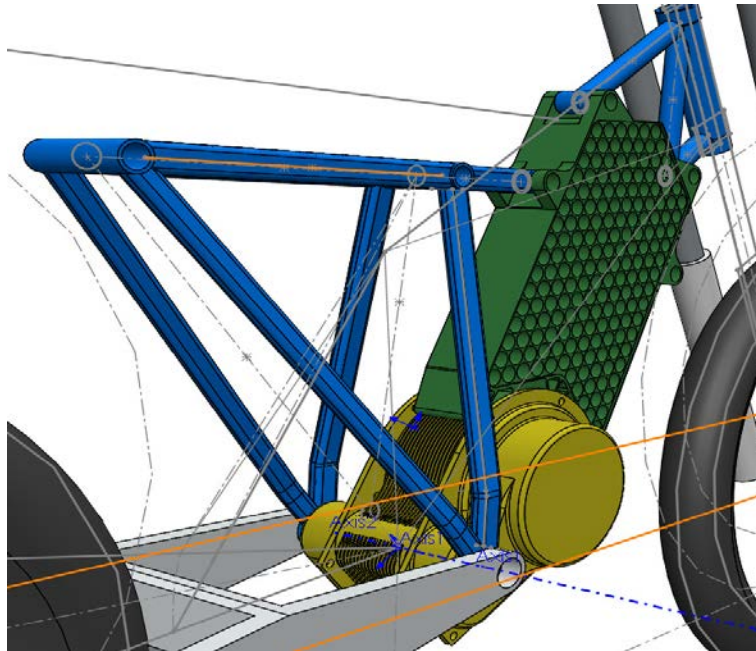
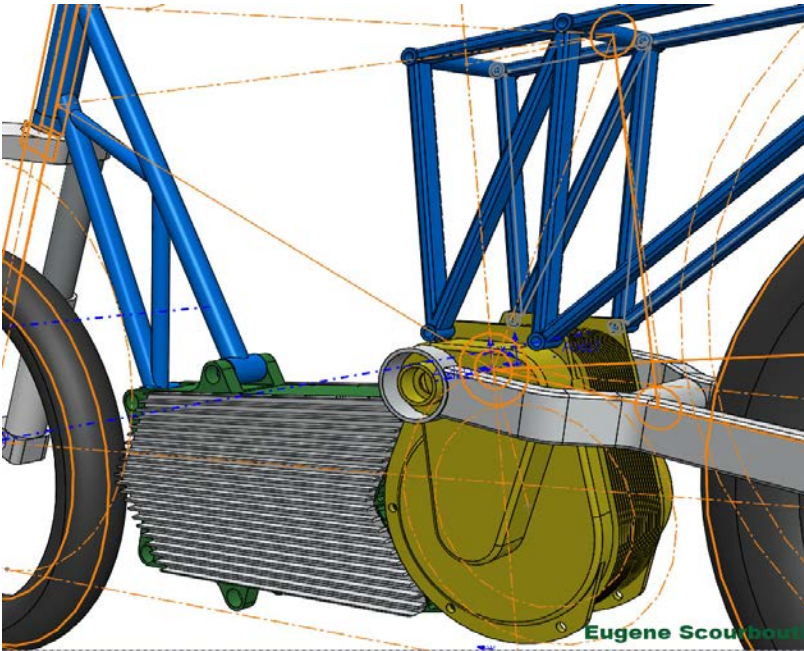
**Organisation:** Department of Products and Systems Design Engineering, University of the Aegean

## Type: PhD Research

**Date/Place:** 2018 – present, Syros-Athens

**Field:** Product design and development, mechanical analysis, simulation, ergonomics, CAD, CAE, renewable energy, electric mobility.

**Clockwise from top left:** 4KW, 3-4 gear, modular platform for 40-50 kg electric motorbike consisting of motor/gearbox unit and battery unit. As stressed memebtrs:.Scooter configuration, On/Off - S/M motorbike configuration, rudimentary stress analysis on motor casing, geometry for both configurations.





**Title:** Design of a Modular Platform for an Ultra-Light electric Motorbike for Urban Commuting and Recreation.

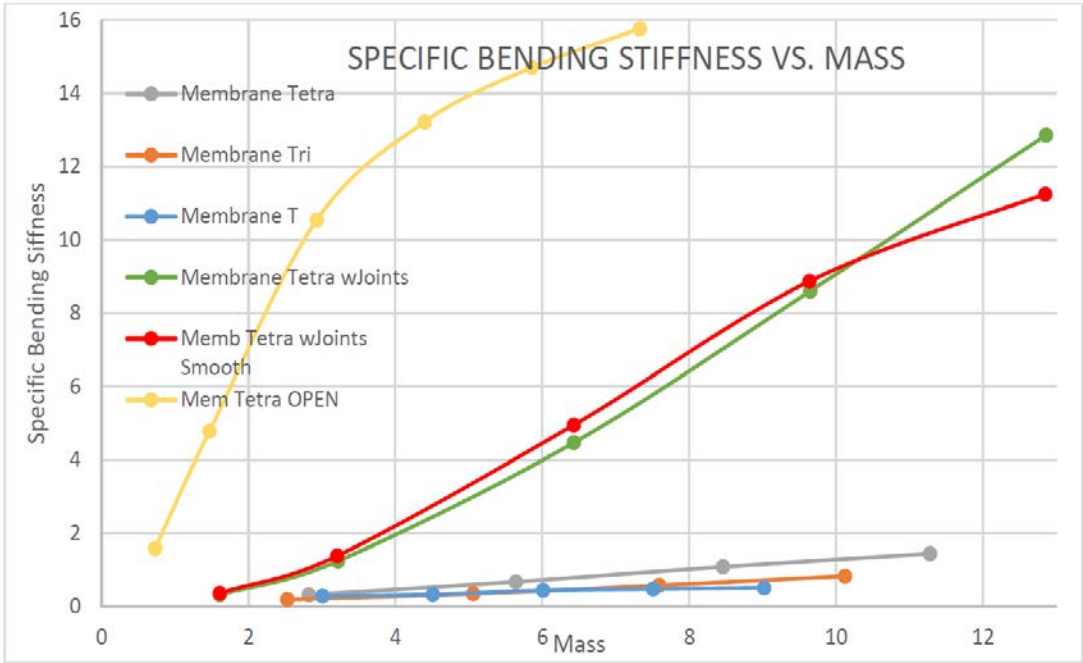
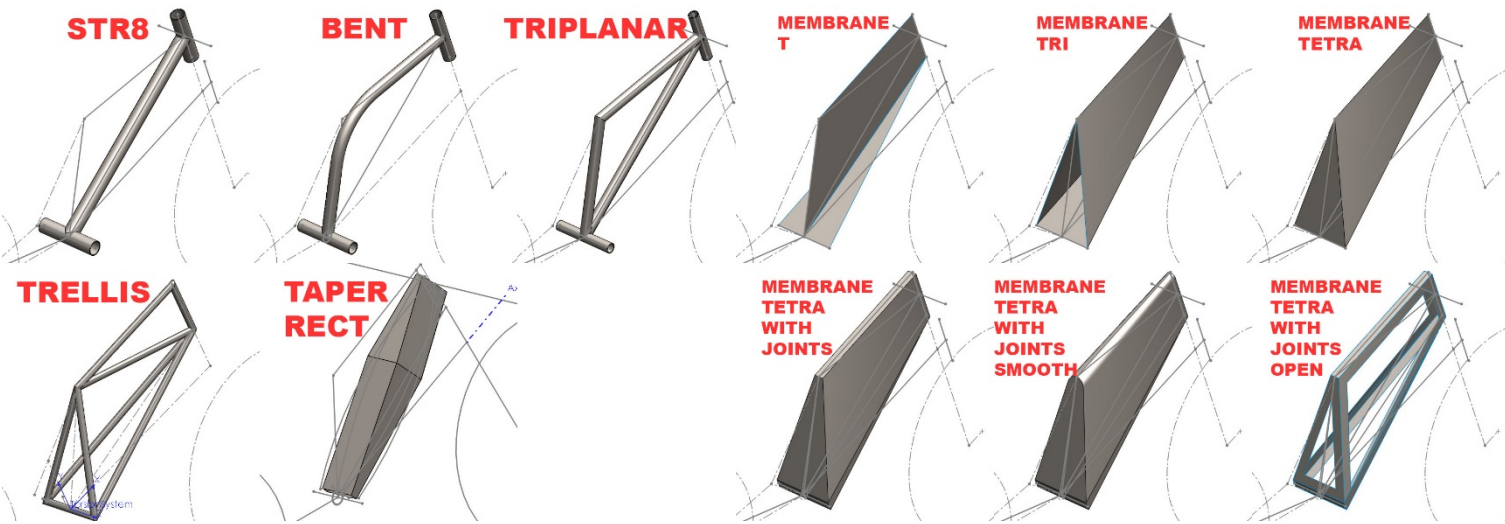
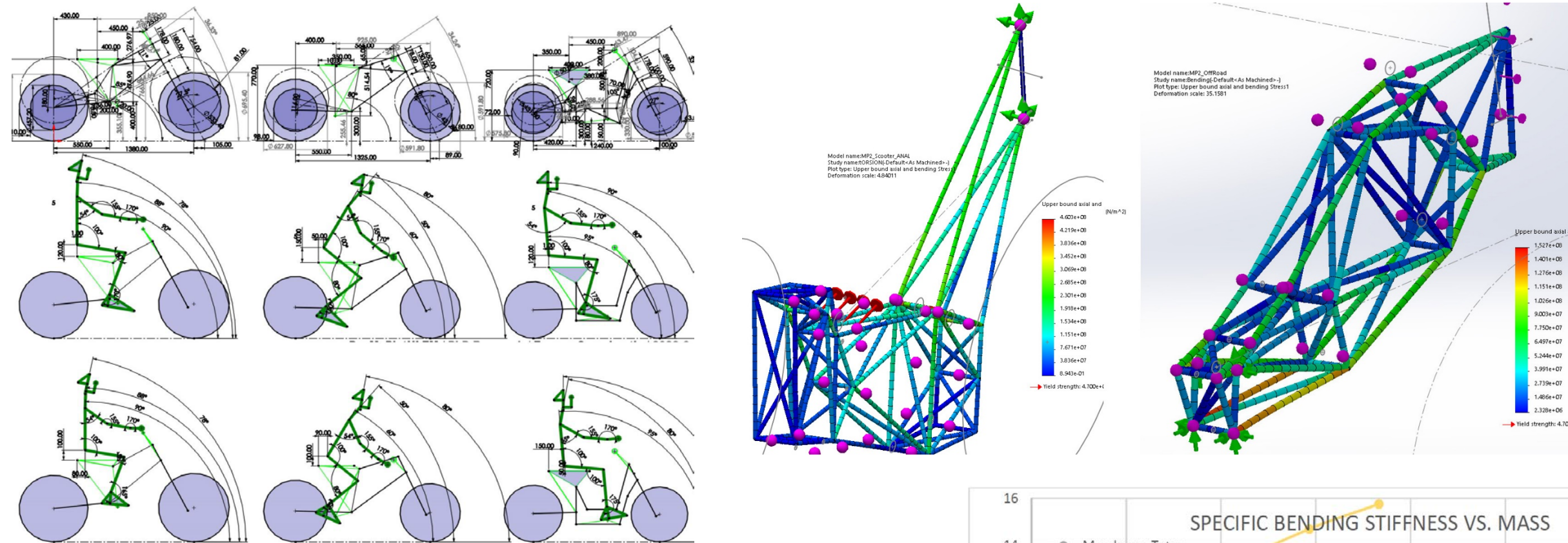
**Organisation:** Department of Products and Systems Design Engineering, University of the Aegean

**Type:** PhD Research

**Date/Place:** 2018 – present, Syros-Athens

**Field:** Product design and development, mechanical analysis, simulation, ergonomics, CAD, CAE, renewable energy, electric mobility.

**Clockwise from top left:** Manequins of 95<sup>th</sup> and 5<sup>th</sup> percentile humans superimposed on basic motorcycle geometries for 3 different motorcycle typologies in order to evaluate posture. Step-through and off-road platform chassis modelled with beam elements and subjected to torsion. Elementary chassis designs for comparative study in bending and torsion. Comparative study results with regard to specific bending stiffness.





**Title:** Thermal Solar Heating Systems

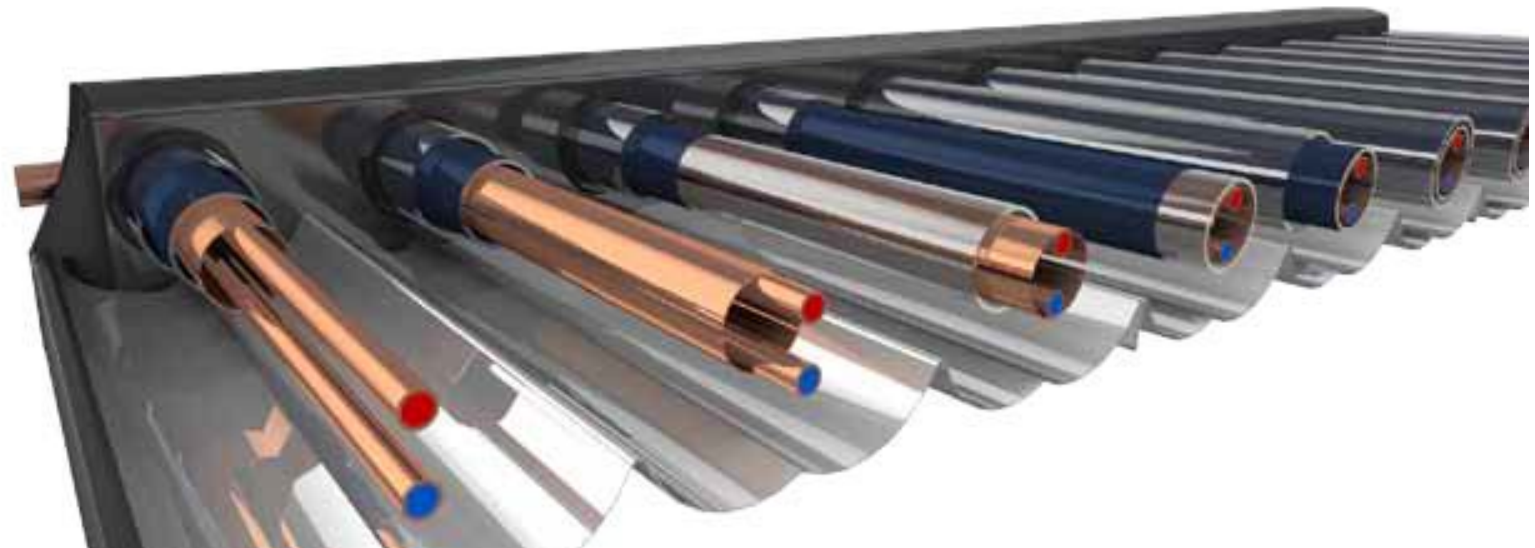
**Organisation:** Calpak

**Type:** Research and Development, New Product Development

**Date/Place:** 2007 – present, Athens-Corinth

**Field:** Product design and development, ergonomics, CAD, detail design, production design, renewable energy.

**Clockwise from top left:** MK4 all aluminium thermosiphonic system with collector body acting as stressed member (2014), MK4 system side view, VTS vacuum collector thermosiphonic system (2015), VTS vacuum collector section (2010), M4 aluminium body selective collector (2013).





**Title:** Green BMP System for Evaluation of Methane Production from Different Biomass Samples

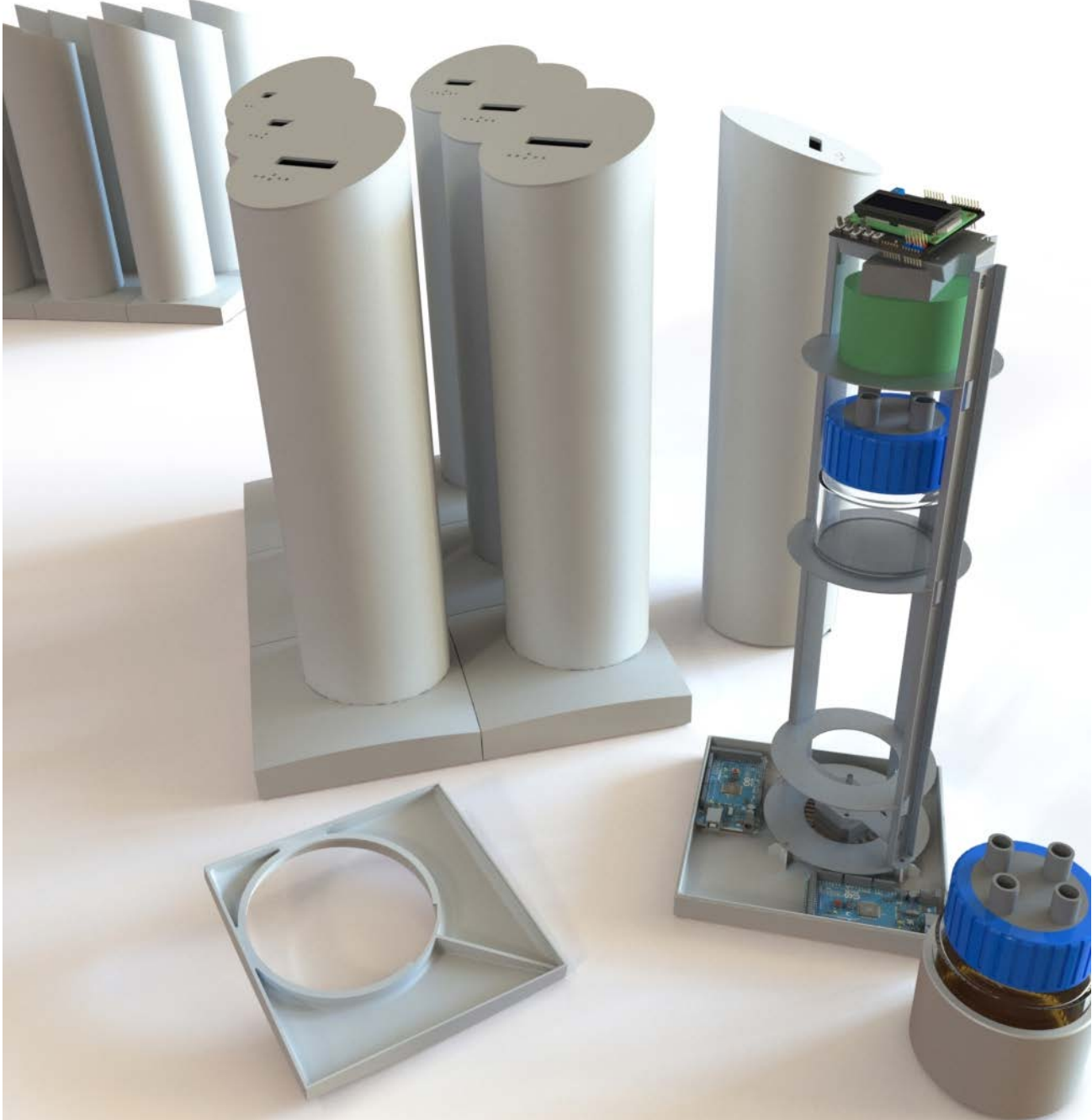
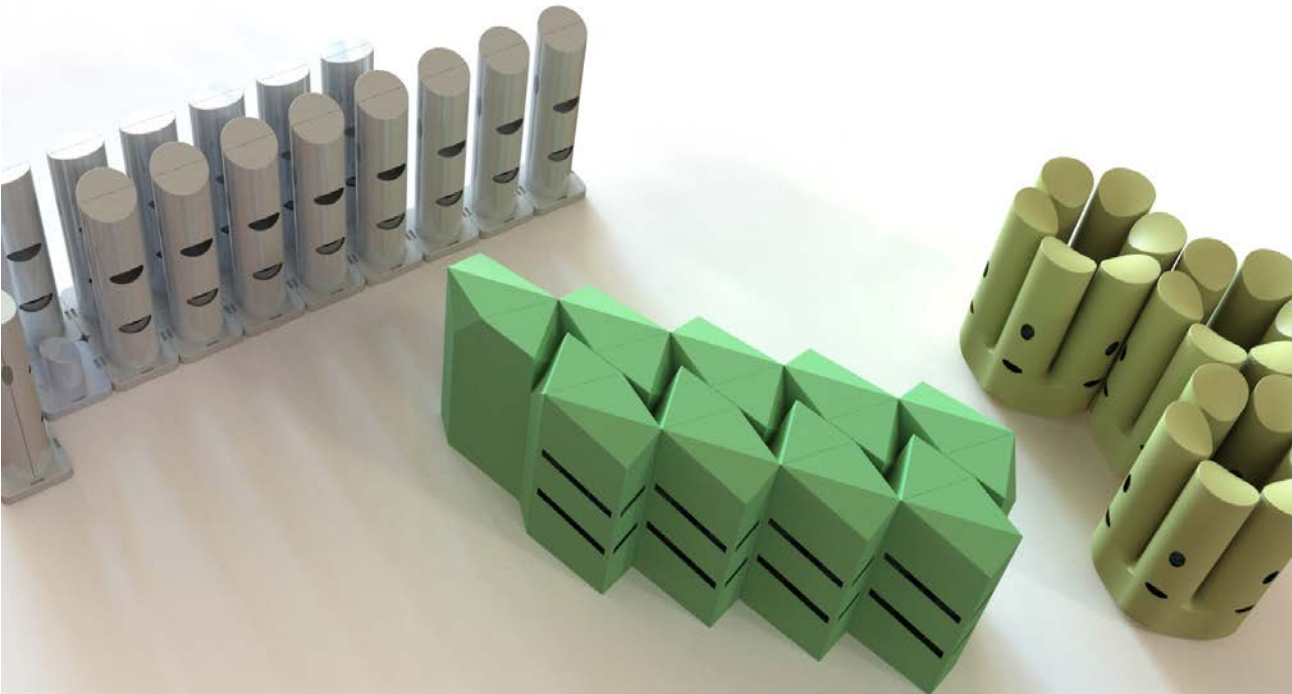
**Organisation:** Integrated Industrial Design Laboratory, Department of Products and Systems Design Engineering, University of the Aegean.

**Type:** Research and Development, New Product Development

**Date/Place:** 2018 – 2022, Syros-Patras

**Field:** Product design and development, ergonomics, CAD, detail design, production design, renewable energy.

**Clockwise from top left:**



Με τη συγχρηματοδότηση της Ελλάδας και της Ευρωπαϊκής Ένωσης



**Title:** Prometheus 5 natural gas electric generator with hydrogen fuel cell.

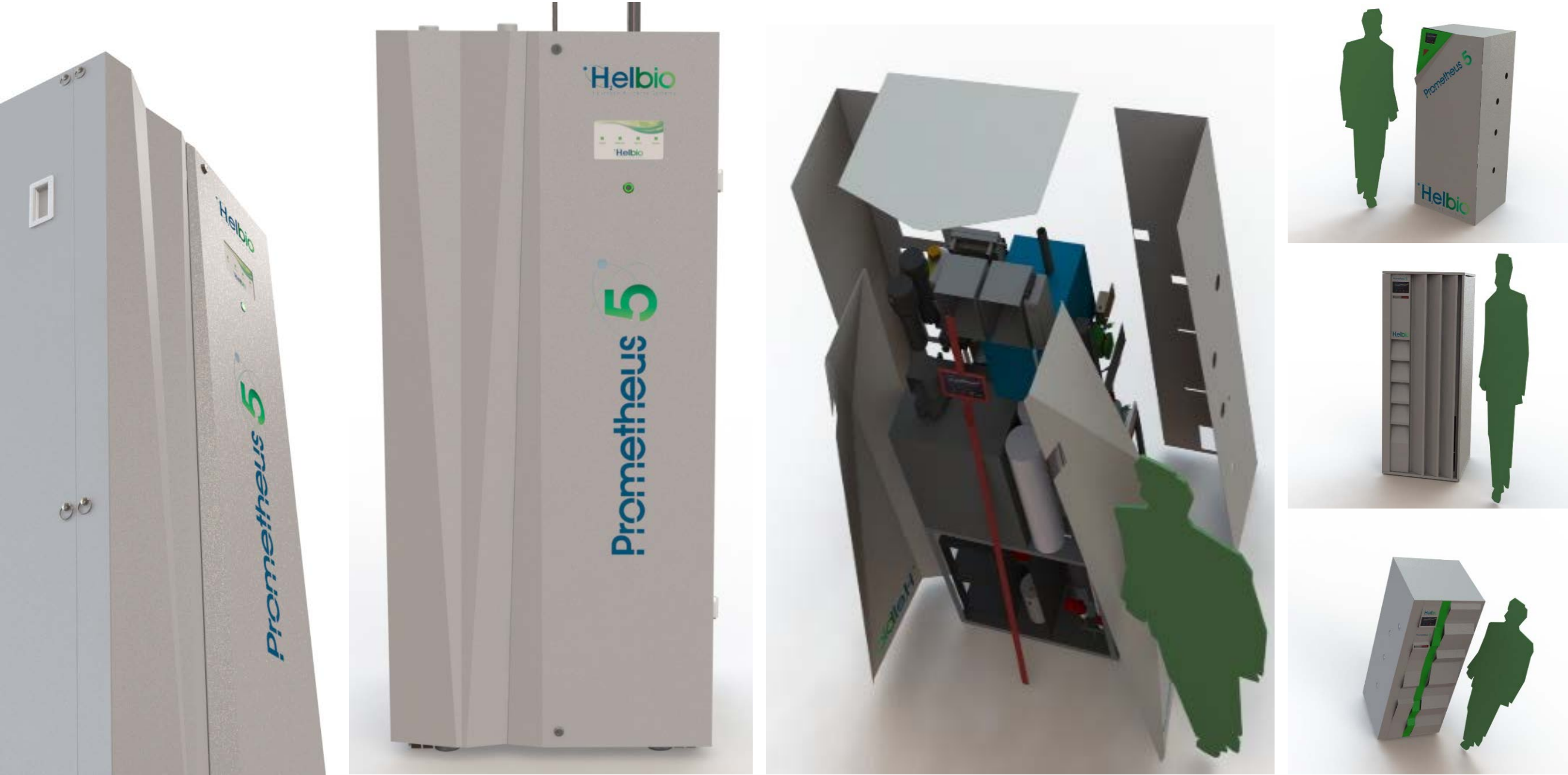
**Organisation:** Integrated Industrial Design Laboratory, Department of Products and Systems Design Engineering, University of the Aegean for HELBIO.

**Type:** Industrial Design

**Date/Place:** 2018, Syros

**Field:** Concept design, ergonomics, CAD, preliminary design, design for manufacturing, renewable energy..

**Left to right:** Final preliminary design detail, final preliminary design, exploded view showing preliminary design and internals, alternative preliminary designs.





**Title:** Intellibox mobile phone automatic service station

**Organisation:** Upstream Systems

**Type:** Research and Development, New Product Development

**Date/Place:** 2011, Athens

**Field:** Concept design, ergonomics, CAD, preliminary design, design for manufacturing, interaction design.





**Title:** Apparatus for Acoustically Improving an Environment / International patent NO: WO/2002/025631 Co-inventor

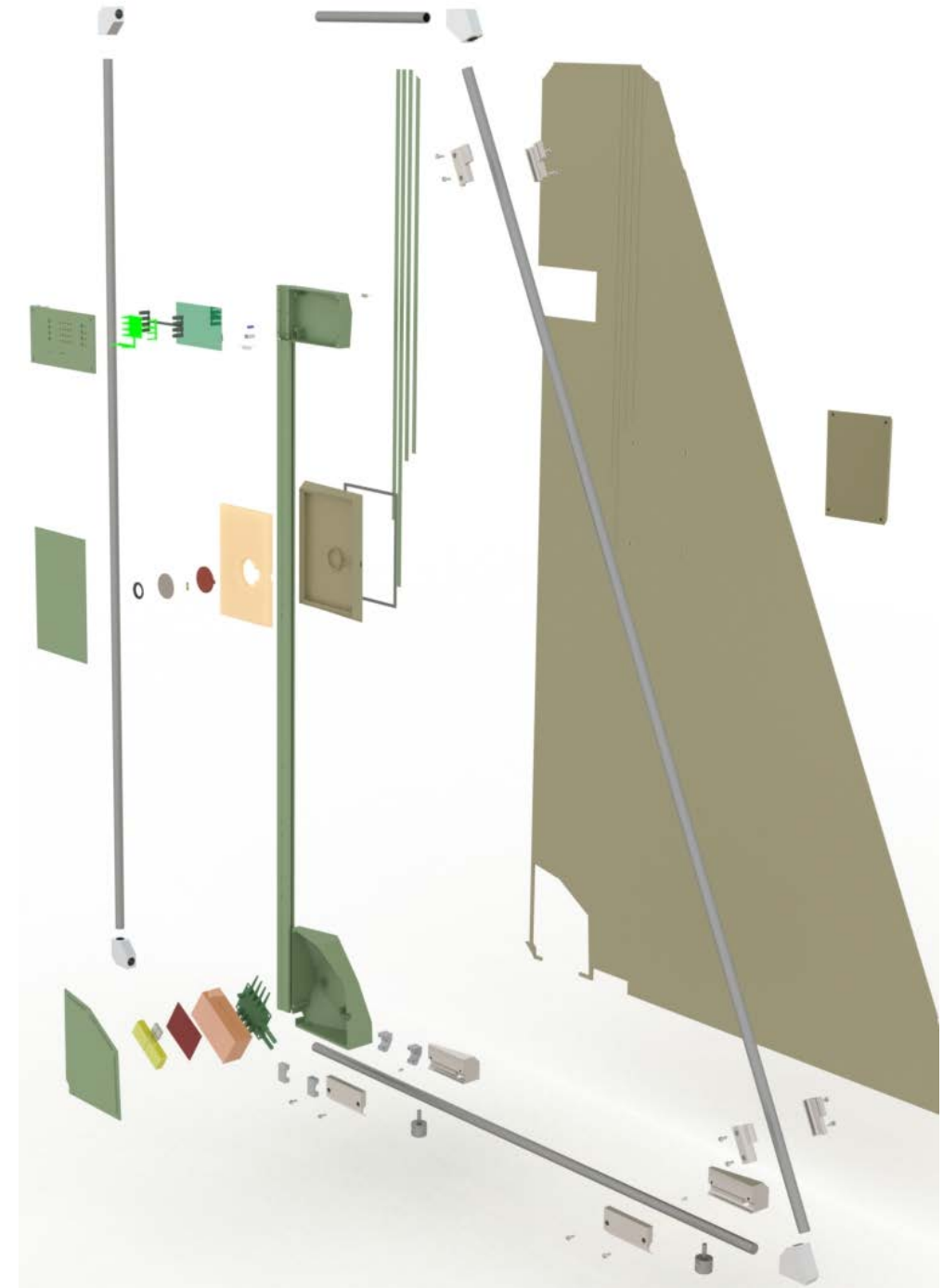
**Organisation:** Royal College of Art, R01

**Type:** Research and Development

**Date/Place:** 2000-2, London

**Field:** Product design, engineering design, prototyping, AI, auditory perception, interior architecture systems..

**Left to right:** Early concept for a stand-alone device, detailed design of prototype design for field user testing.





**Title:** Apparatus for Acoustically Improving an Environment / International patent NO: WO/2002/025631 Co-inventor

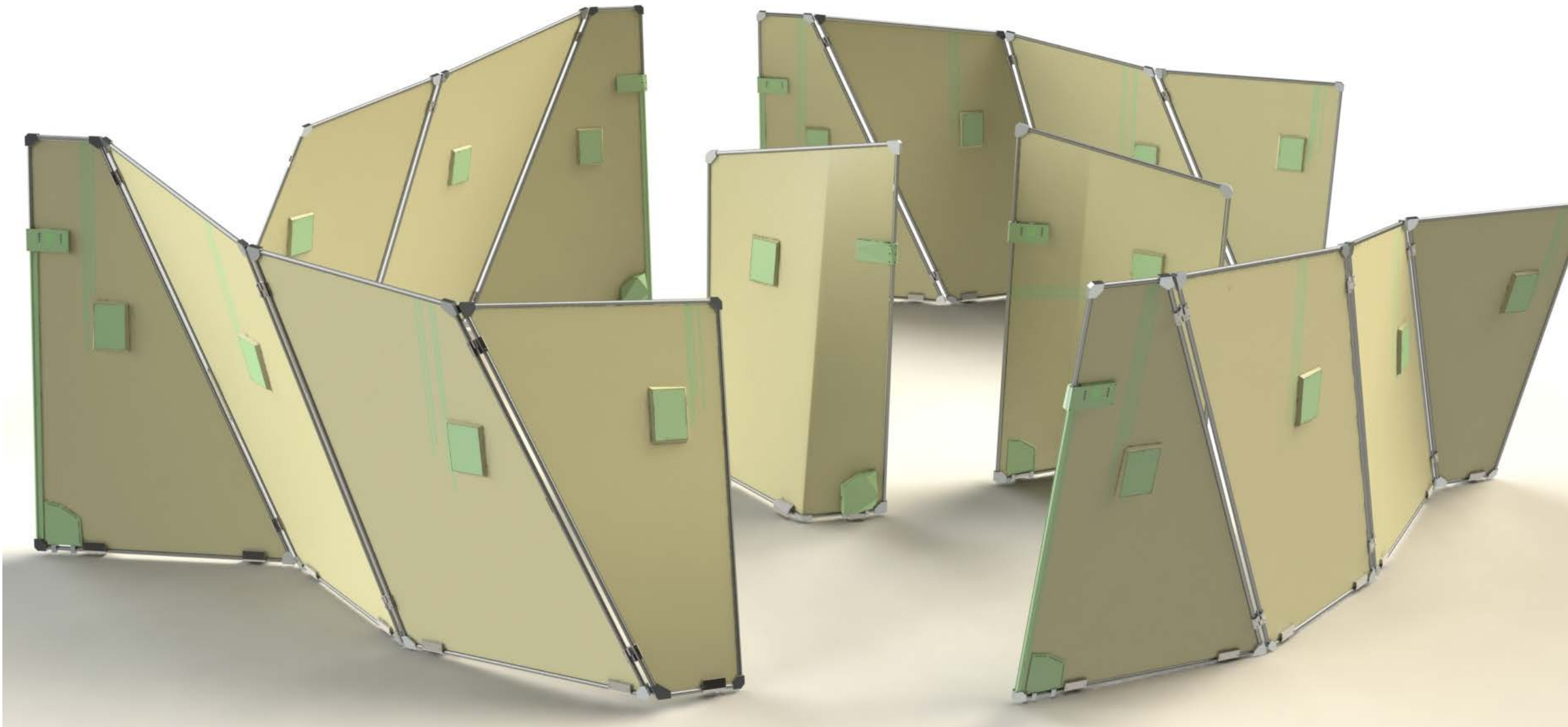
**Organisation:** Herman Miller, Aylo

**Type:** Research and Development, New Product Development

**Date/Place:** 2000-2, London

**Field:** Product design, engineering design, prototyping, AI, auditory perception, architecture systems..

**Below:** Different configurations of final detailed design for prototype intended for extensive field user testing.





**Title:** Remote Controlled Ergonomic Task Light, *British patent GB2352502, Inventor*

**Organisation:** Eugene Scourboutis

**Type:** Research and Development,

**Date/Place:** 1999 – 2007, London-Athens

**Field:** Product design, lighting design, prototyping, visual perception.

**Left to right:** Alternative designs with respect to interaction principle, formal qualities **and** manufacturing for physical and virtual prototyping and testing.





**Title:** Persado Athens Headquarters Interior Design

**Organisation:** Persado

**Type:** Interior and Furniture Design

**Date/Place:** 2013, Athens

**Field:** Interior design, furniture design, lighting design, art direction, space planning, batch production, project management, .

**Clockwise from top left:** Wallpaper photo collage, laser cut floor lamp, kitchen/bar area with bespoke furniture, OSB library, 8 people conference table and assorted library, entrance area with collage wallpaper and breakout bar in the background, 14 people conference table with accompanying library and wallpaper.





**Title:** Upstream Systems Athens Headquarters Interior Design

**Organisation:** Upstream Systems

**Type:** Interior and Furniture Design

**Date/Place:** 2007-8, Athens

**Field:** Interior design, furniture design, lighting design, art direction, space planning.

**Left to right:** Reception, multifunctional conference table.





**Title:** Smart furniture range for confined living spaces.

**Organisation:** Small Beautiful Things

**Type:** Furniture and product design

**Date/Place:** 2002-6, London

**Field:** Furniture design, product design, production design and management, design startup.

**Left:** Loungebox multifunctional, transformative coffee table. **Right:** Lighside bedside table/storage/light.





**Title:** Smart furniture range for confined living spaces.

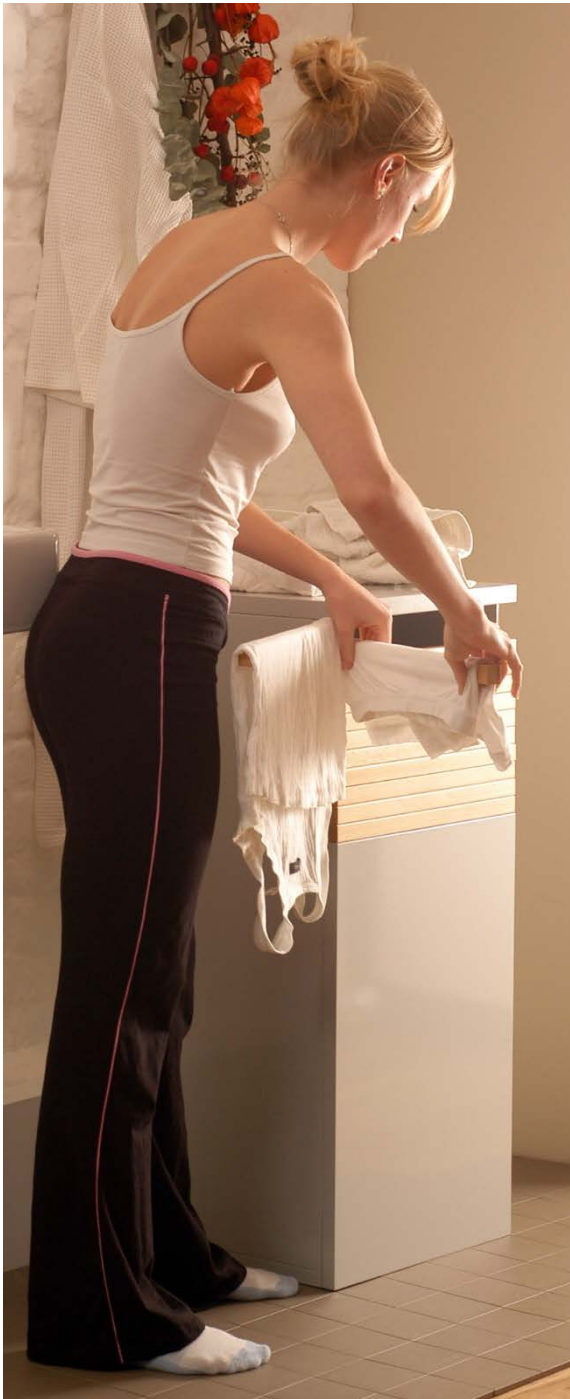
**Organisation:** Small Beautiful Things

**Type:** Furniture and product design

**Date/Place:** 2002-6, London

**Field:** Furniture design, product design, production design and management, design startup.

**Left:** Dryline laundry bin/clothes rack, various preliminary designs for multifunctional, transformational furniture systems. **Right:** Sidecab storage system/nest of tables,





**Title:** Smart furniture range for confined living spaces.

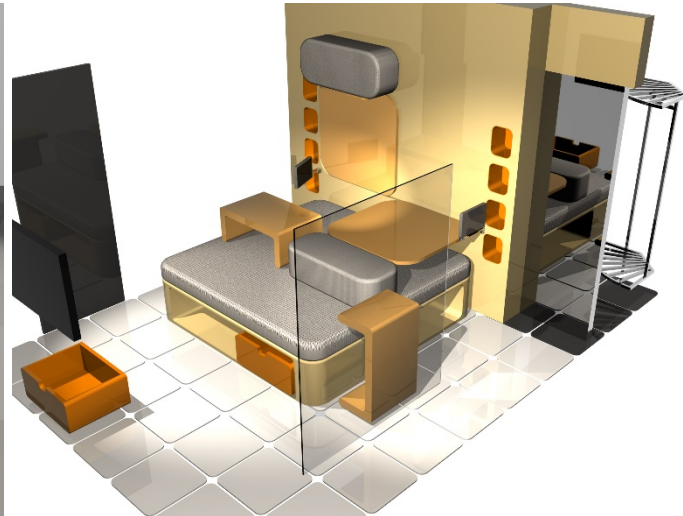
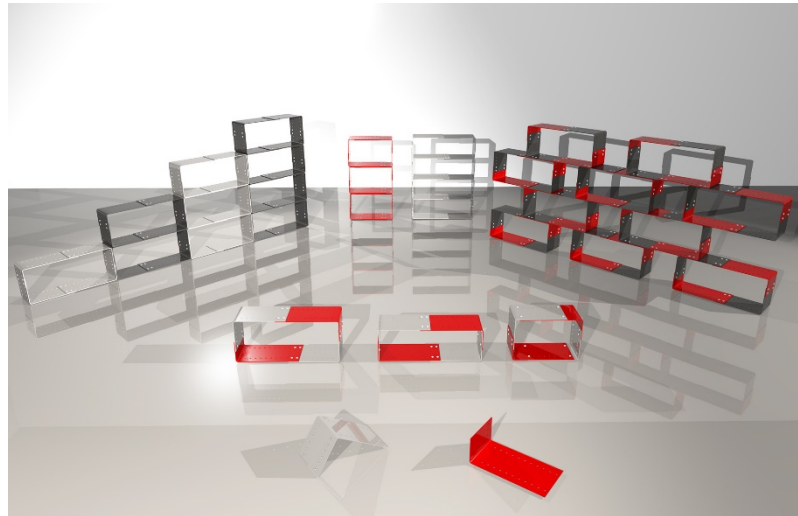
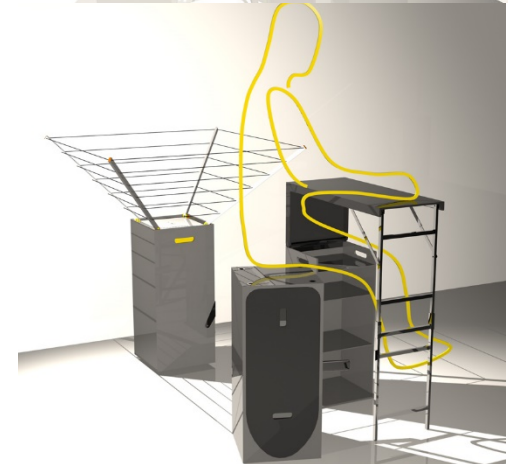
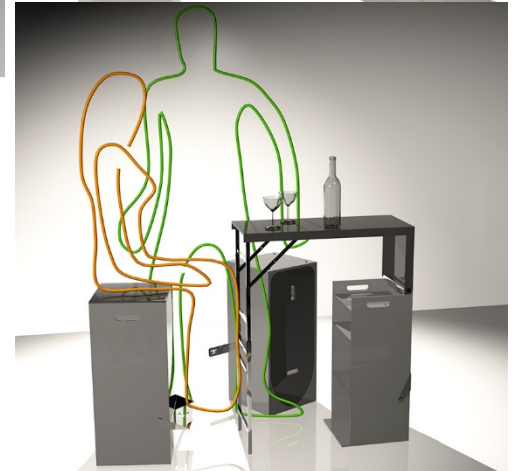
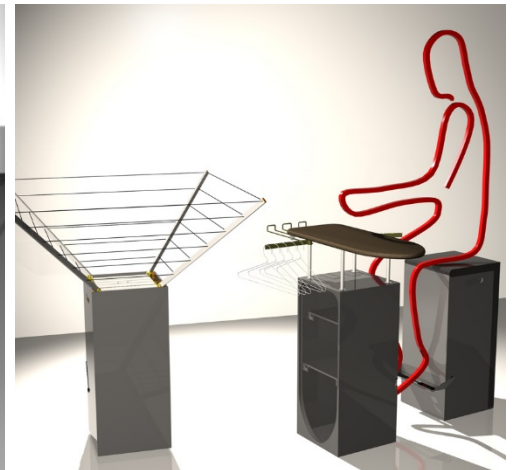
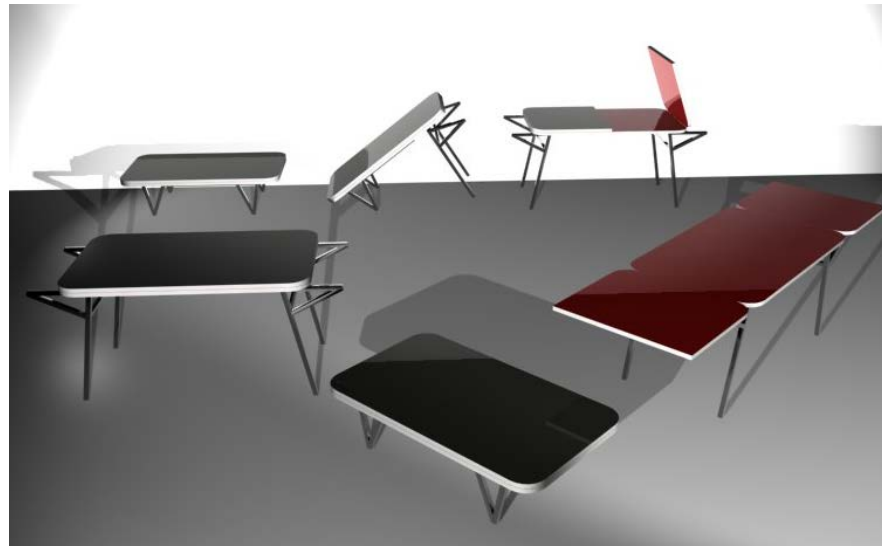
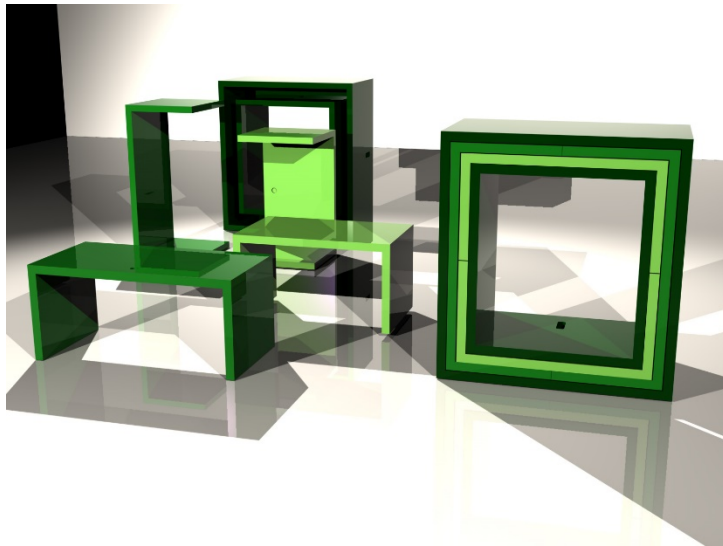
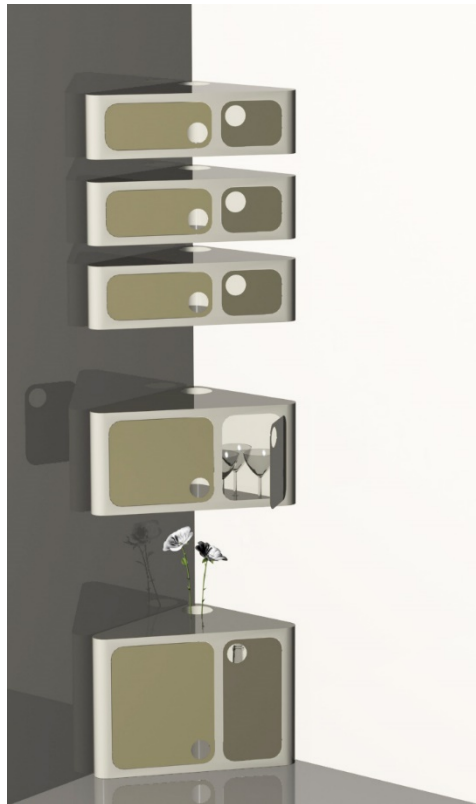
**Organisation:** Small Beautiful Things

**Type:** Research and Development

**Date/Place:** 2002-6, London

**Field:** Furniture design, research, concept design.

**Clockwise from top left:** Furniture concepts. Sheet metal corner shelving and storage system, nesting side tables, coffee/dining transformer table, multifunctional stools for the kitchen offering storage, clothes rack, ironing board and work or bar surface, micro hotel room with multifunctional furniture, sheet steel bookcase system, moulded plywood storage/display system.





**Title:** Anafi Beach Bar.

**Organisation:** Synapsis Engineering

**Type:** Furniture and interior design,

**Date/Place:** 2016, Athens - Anafi

**Field:** Furniture design, interior design, production design and management.

**Clockwise from top left:** Finished bar showing bespoke furniture, final design showing furniture, decking, canopy, bar structures and equipment.





**Title:** Bar lights.

**Organisation:** Nixon Bar

**Type:** Lighti design.

**Date/Place:** 2017, Athens

**Field:** Light design, lighting design, production design.

**Clockwise from top left:** Led large chandelier incorporating crystals form 1960's vintage chandelier from Hilton Athens, over the table ergonomic ceiling light from laser cut acrylic and LED projector, small Led chandelier.





**Title:** Balustrade – seating system.

**Organisation:** Deca Architecture

**Type:** Furniture design

**Date/Place:** 2015-6, Athens-Porto Rafti

**Field:** Furniture design, architectural systems, detail design, production design.

**Bellow:** Wood and steel structure serving as multifunctional seating bar system and as a balustrade.





**Title:** Construction company office

**Organisation:** Salcon Construction

**Type:** Furniture design, interior design

**Date/Place:** 2006-7, Athens

**Field:** Furniture design, interior design, space planning, artwork, production design.

**Clockwise from top left:** Main reception area with seating area and materials showcase furniture, director's office with bespoke furniture and artwork, reception desk and waiting area.



**Title:** Aluminium façade system

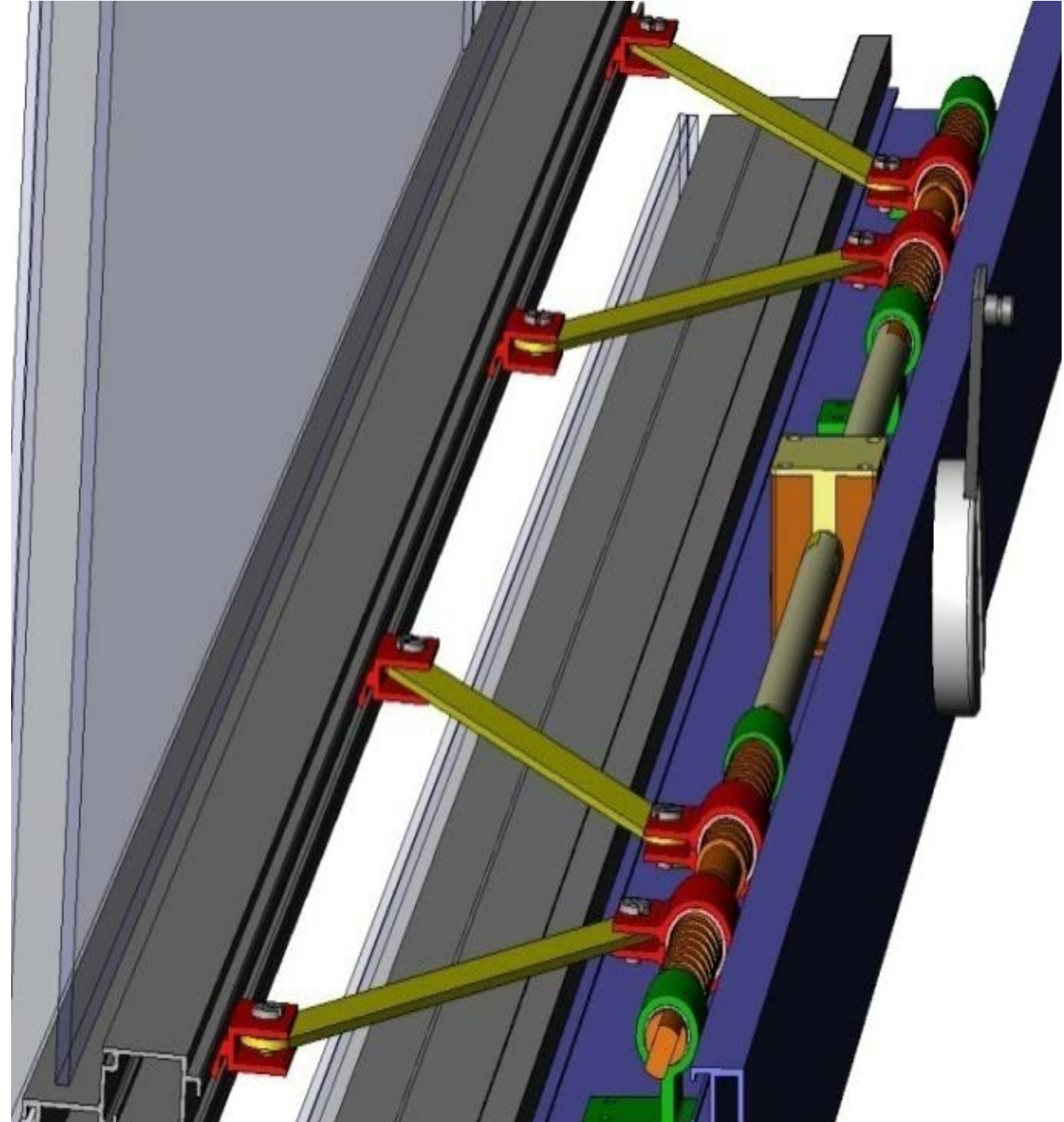
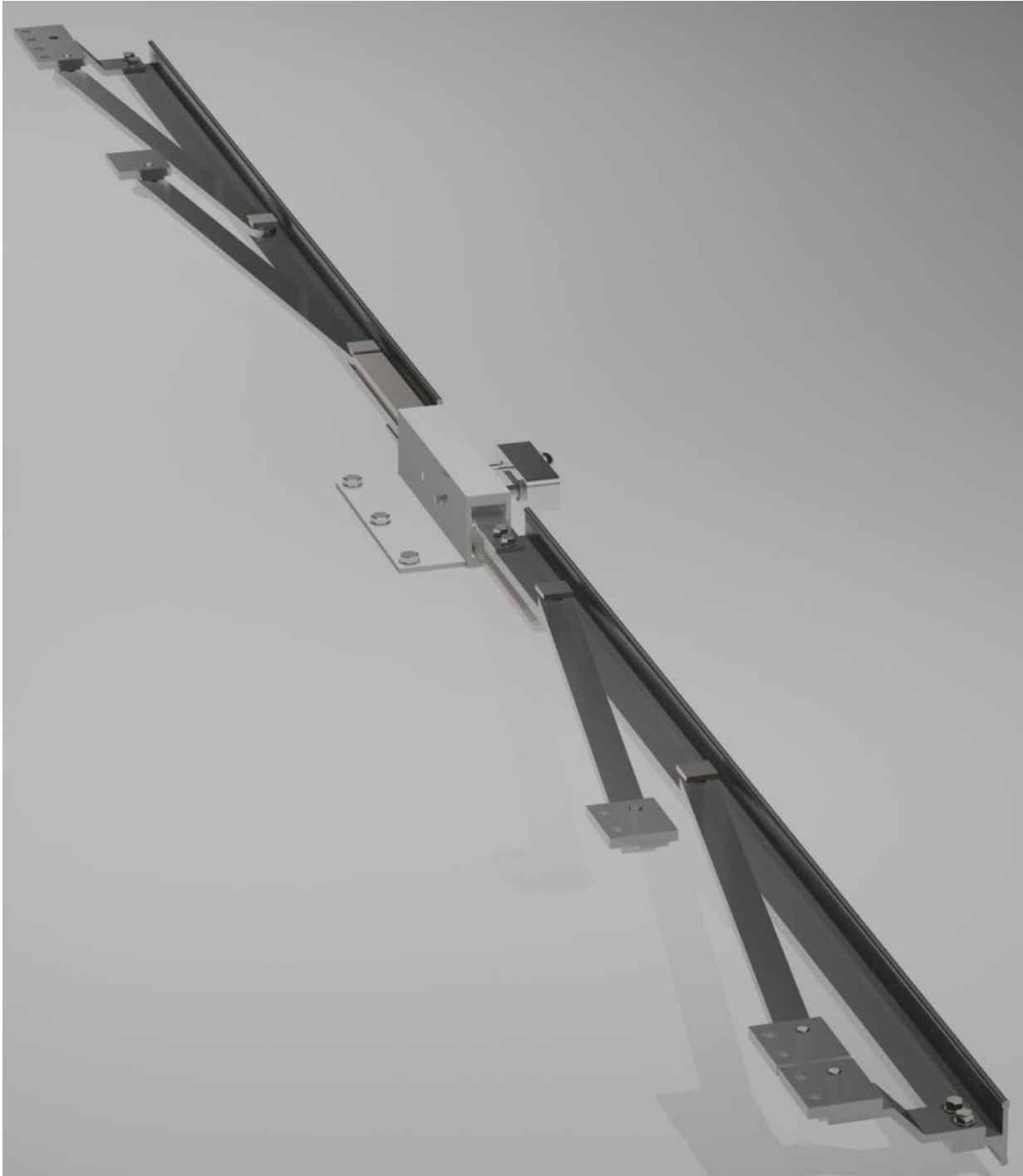
**Organisation:** Alutotal

**Type:** Engineering design

**Date/Place:** 2006-7, Athens

**Field:** Engineering design, mechanical design, detail design, architectural systems.

**Left to right:** Final detail design of window opening system, alternative preliminary design..





**Title:** mPad, digitizing pad for salespeople

**Organisation:** British Gas

**Type:** Industrial design

**Date/Place:** 2004, London

**Field:** Industrial design, ergonomics, prototyping, testing.

**Clockwise from top left:** Alternative views of final detailed design, concept sketches.



**Title:** Retractable Roof

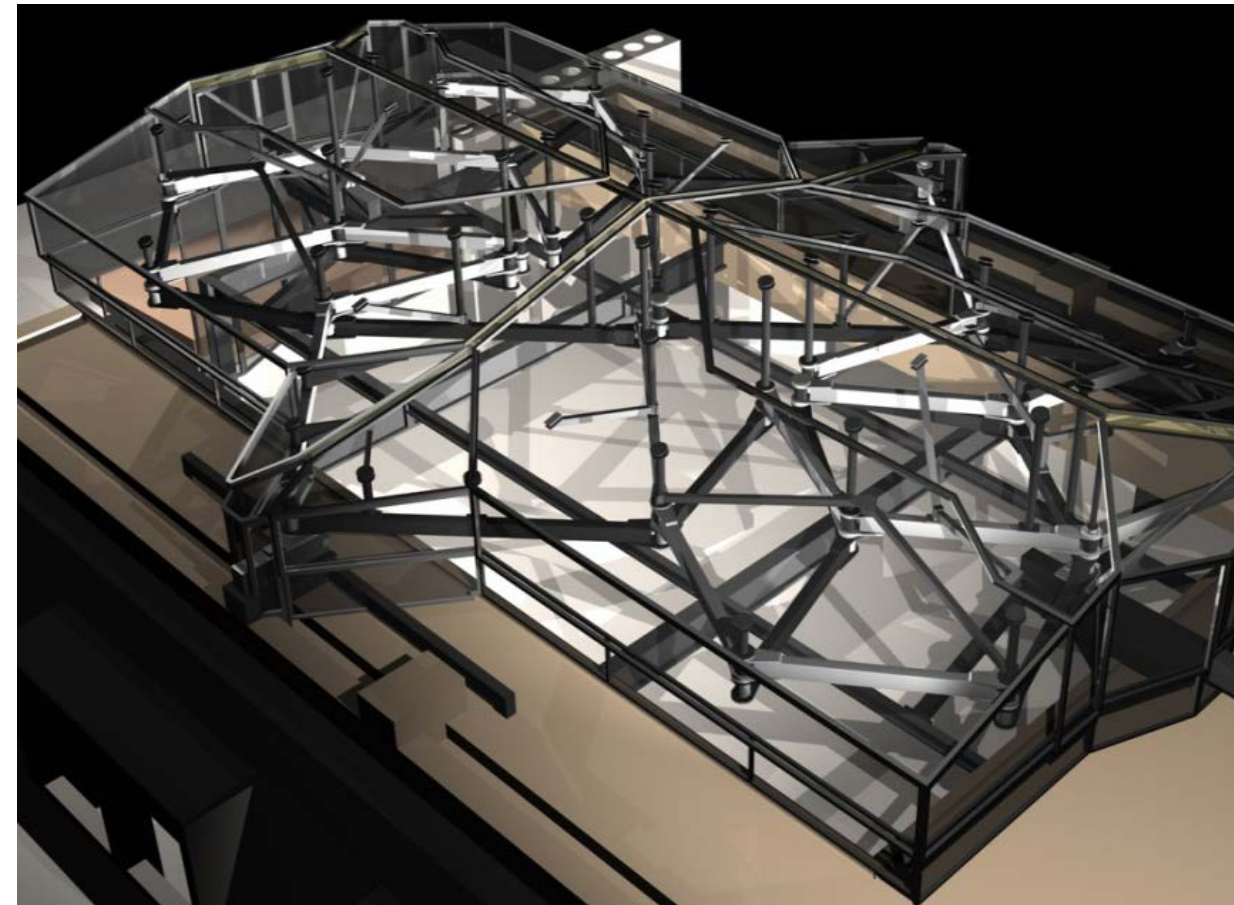
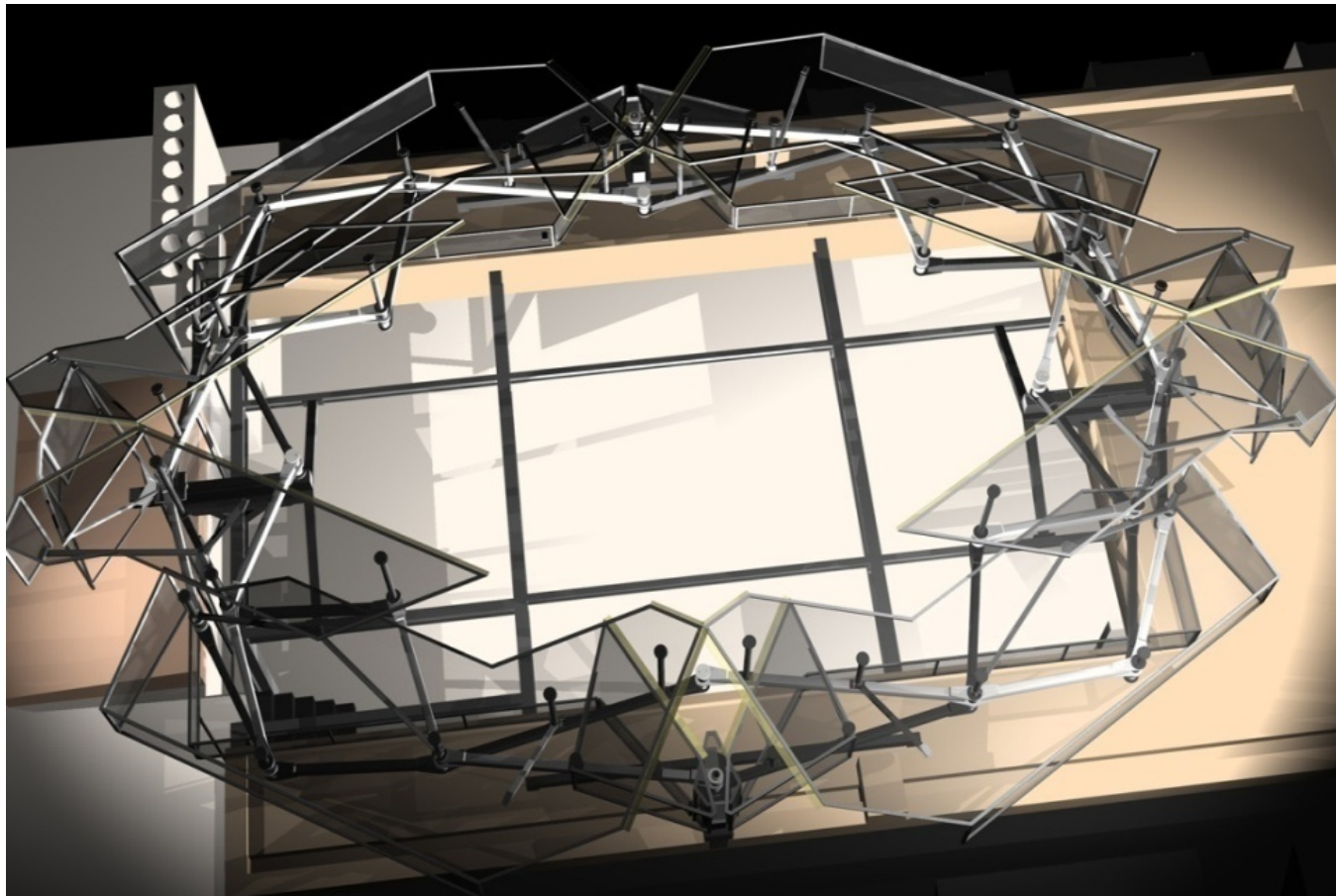
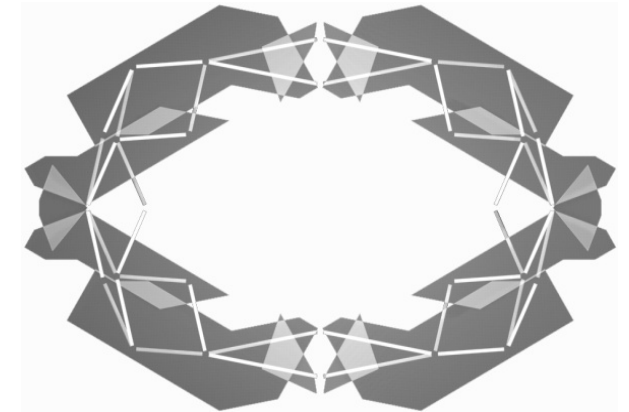
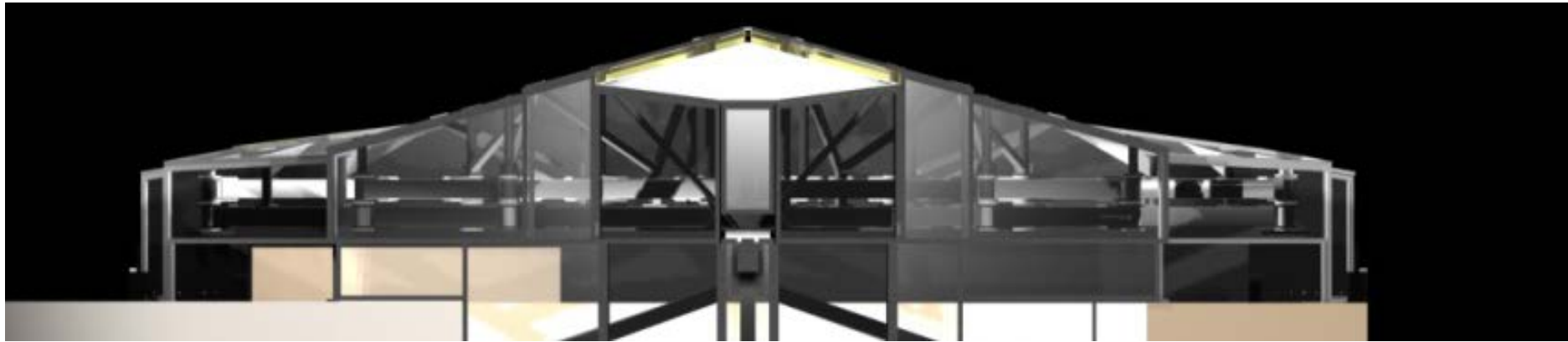
**Organisation:** Century Club London

**Type:** Architectural systems design

**Date/Place:** 2002, London

**Field:** Architectural systems, mechanical design, detail design, project management.

**Clockwise from top left:** Front view of roof system, top view showing oval shaped deployable structure and roof panels, roof closed, roof fully open.





**Title:** Lightfold sheet metal uplighter

**Organisation:** 'Interior Inspirations' competition by Blueprint Magazine and British Steel

**Type:** Design award, 1<sup>st</sup> Prize

**Date/Place:** 2002, London

**Field:** Light design, product design..

**Bellow:** Lightfold uplighter constructed from a single sheet of sheet metal laser cut and folded.



**Title:** Multiplicity Steet Light

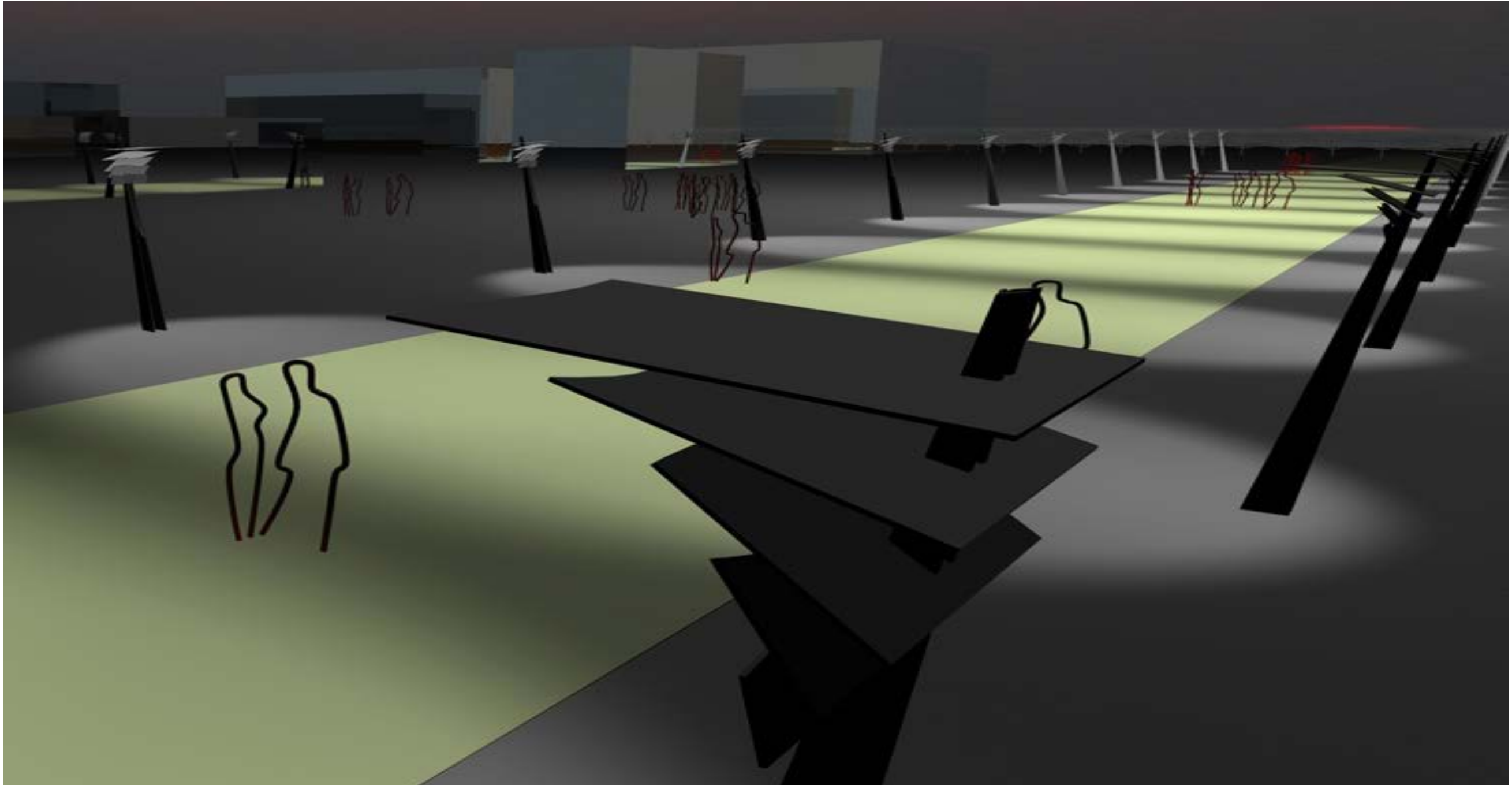
**Organisation:** Incheon International Design Competition [Korea]

**Type:** Design award, Selected Work

**Date/Place:** 2005, London

**Field:** Light design, public space design

**Bellow:** Multiplicity street light with indirect lighting and formal qualities inspired by traditional east Asian sail boats.





**Title:** At home versatile mobile workstation

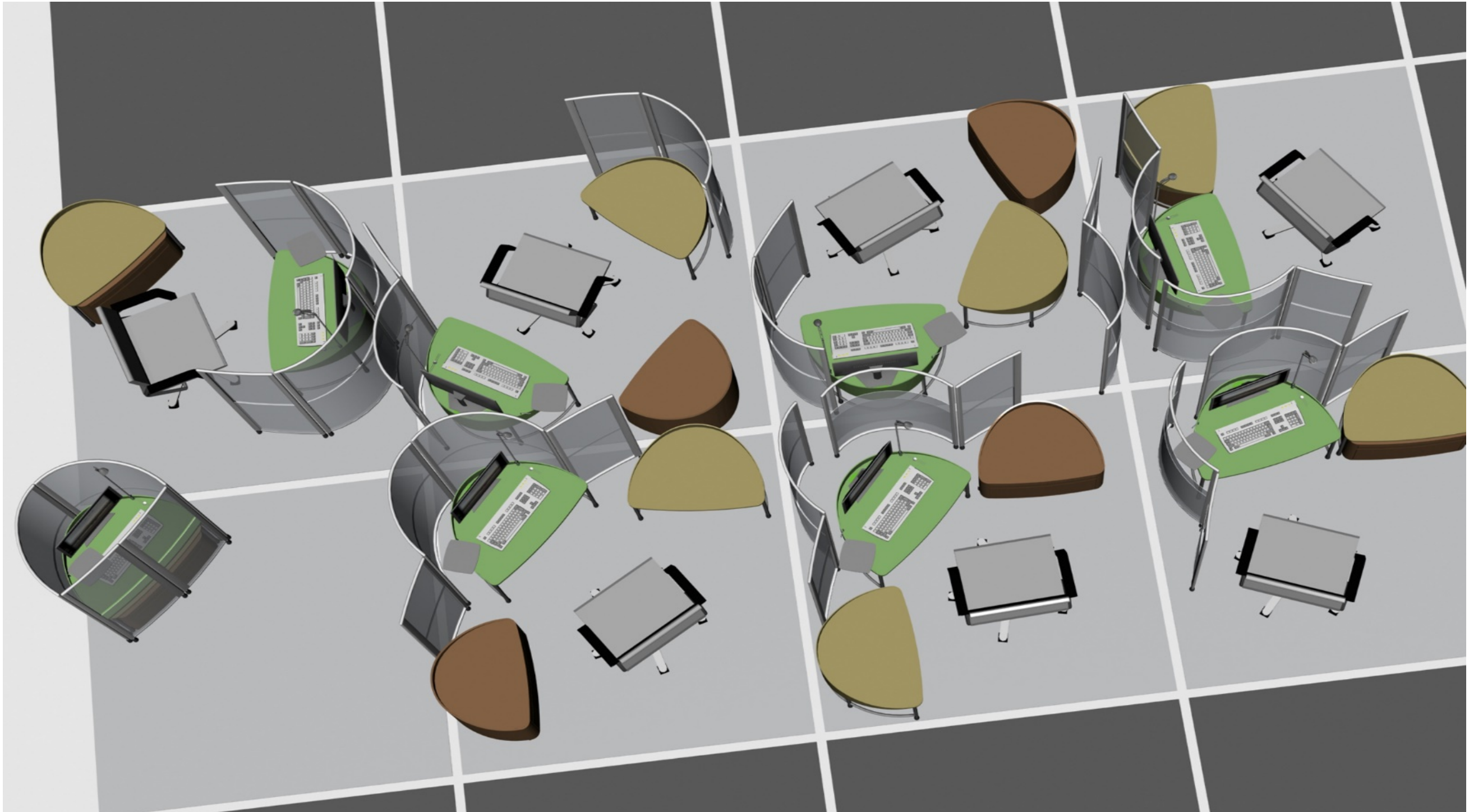
**Organisation:** 'Me at Work' competition by Blueprint Magazine and Teknion

**Type:** Design award, distinction

**Date/Place:** 2003, London

**Field:** Office furniture design, preliminary design, ergonomics..

**Bellow:** At home workstation system including versatile screen, system of table and storage compartments in different configurations..



**Title:** Antithesis office furniture system

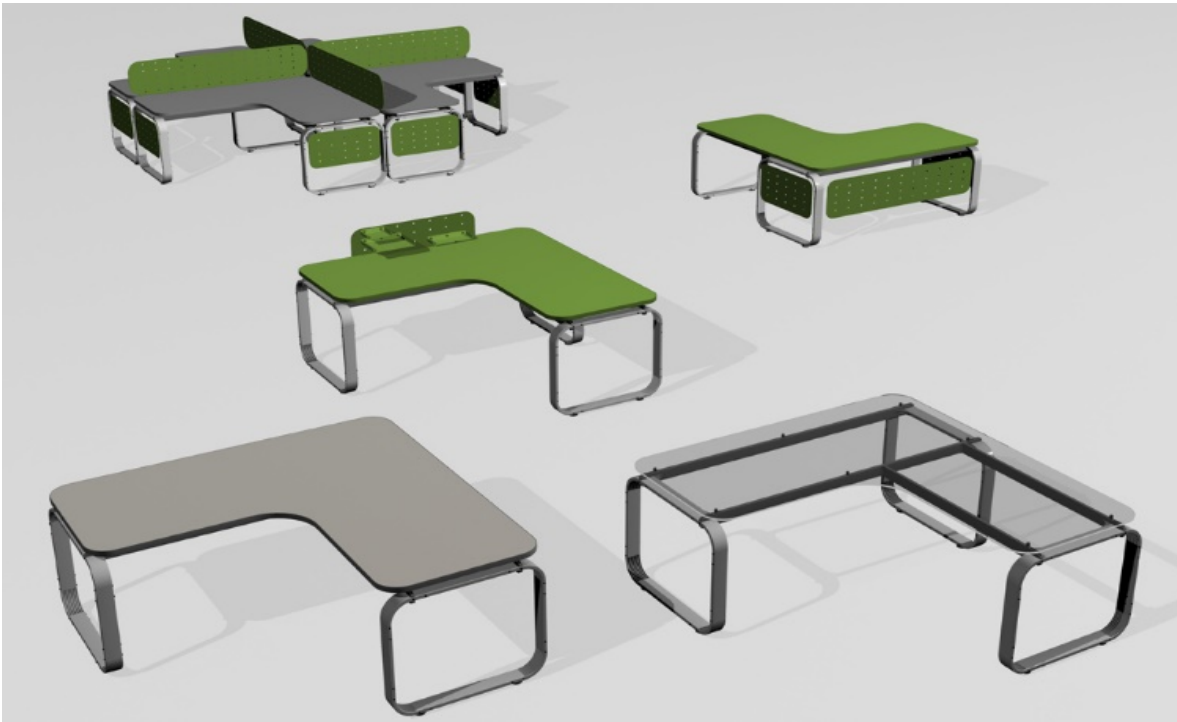
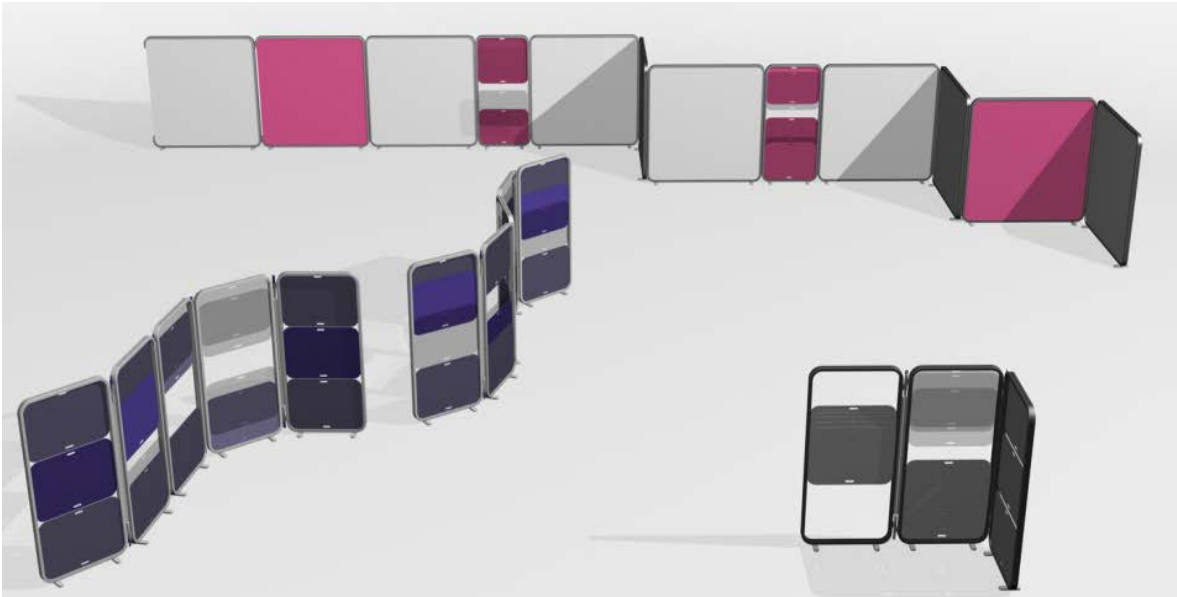
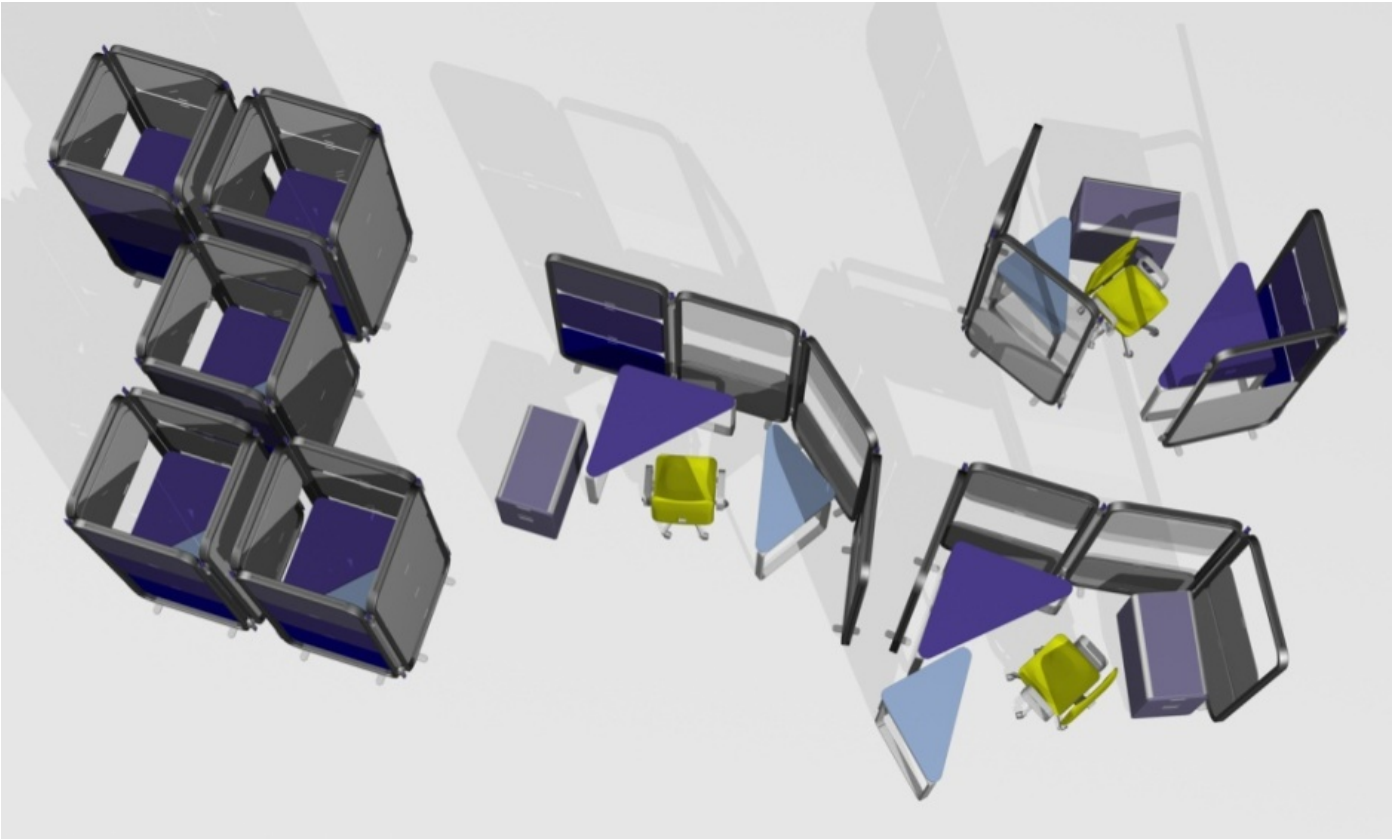
**Organisation:** Dromeas 3<sup>rd</sup> International Industrial Design Competition

**Type:** Design award, distinction

**Date/Place:** 2006, Athens

**Field:** Office furniture design, preliminary design, ergonomics..

**Clockwise from top left:** Mobile workstation system including versatile screen, system of tables and storage compartments in different configurations, modular screen system, desk system, single desk/





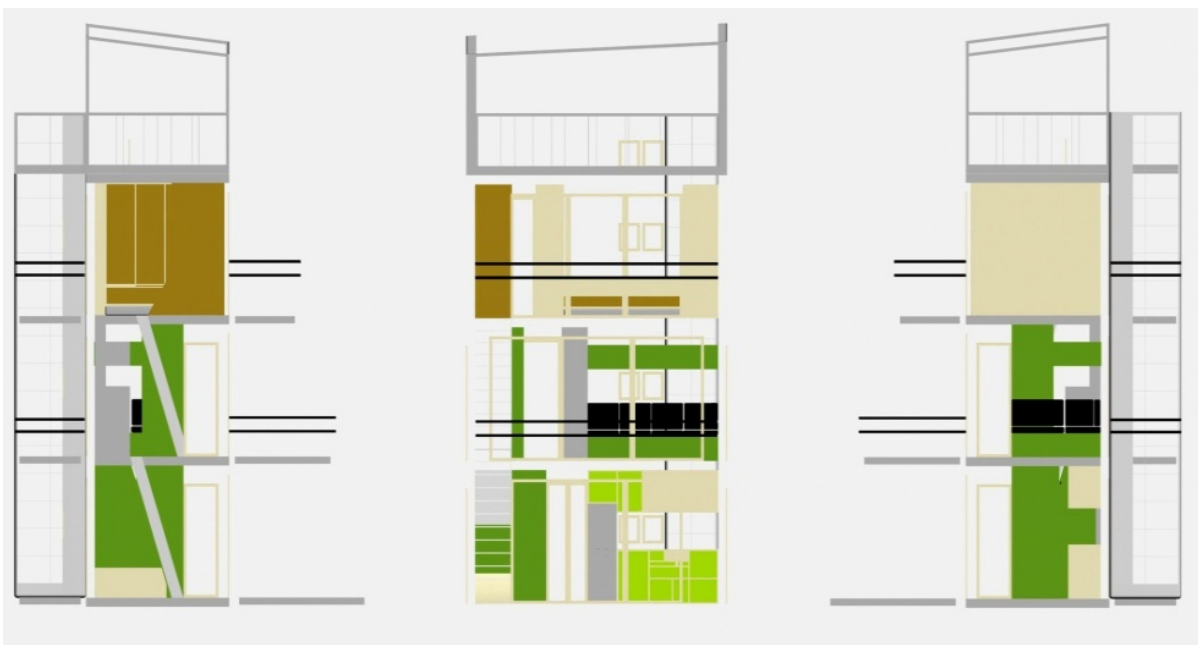
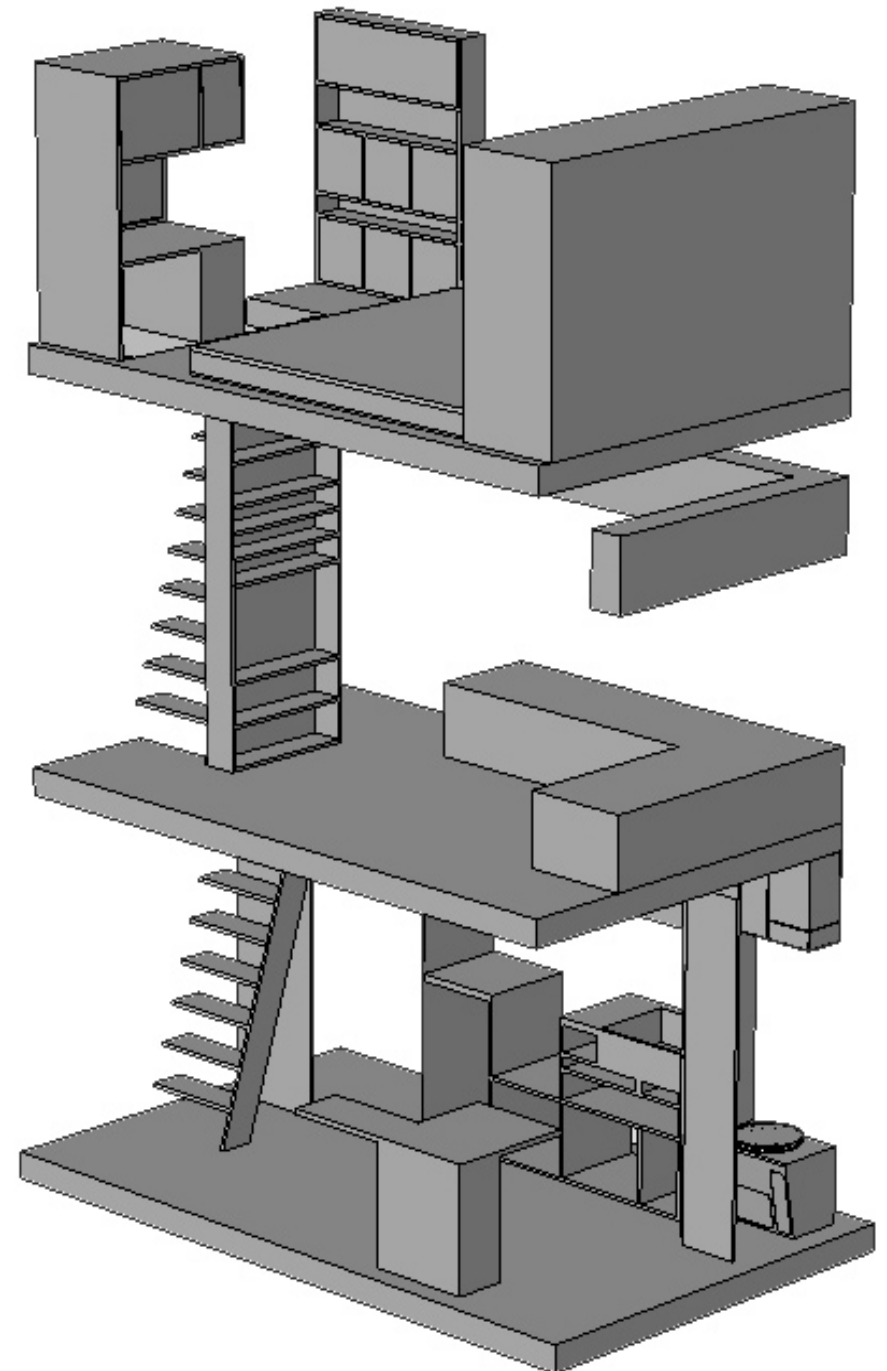
**Title:** Lovenest prefabricated country home

**Organisation:** Edilportale architecture design awards

**Type:** Design award, short listed

**Date/Place:** 2006, Athens

**Field:** Architecture, product design, interior design



**Title:** Eight, low consumption light from reused water bottles and copper plumbing components.

**Organisation:** “Re-design, Re\_use, Re\_cycle” product design exhibition, Green Design Festival

**Type:** Light design

**Date/Place:** 2008, Athens

**Field:** Light design, upcycling.





**Title:** Miscellaneous Light Installations

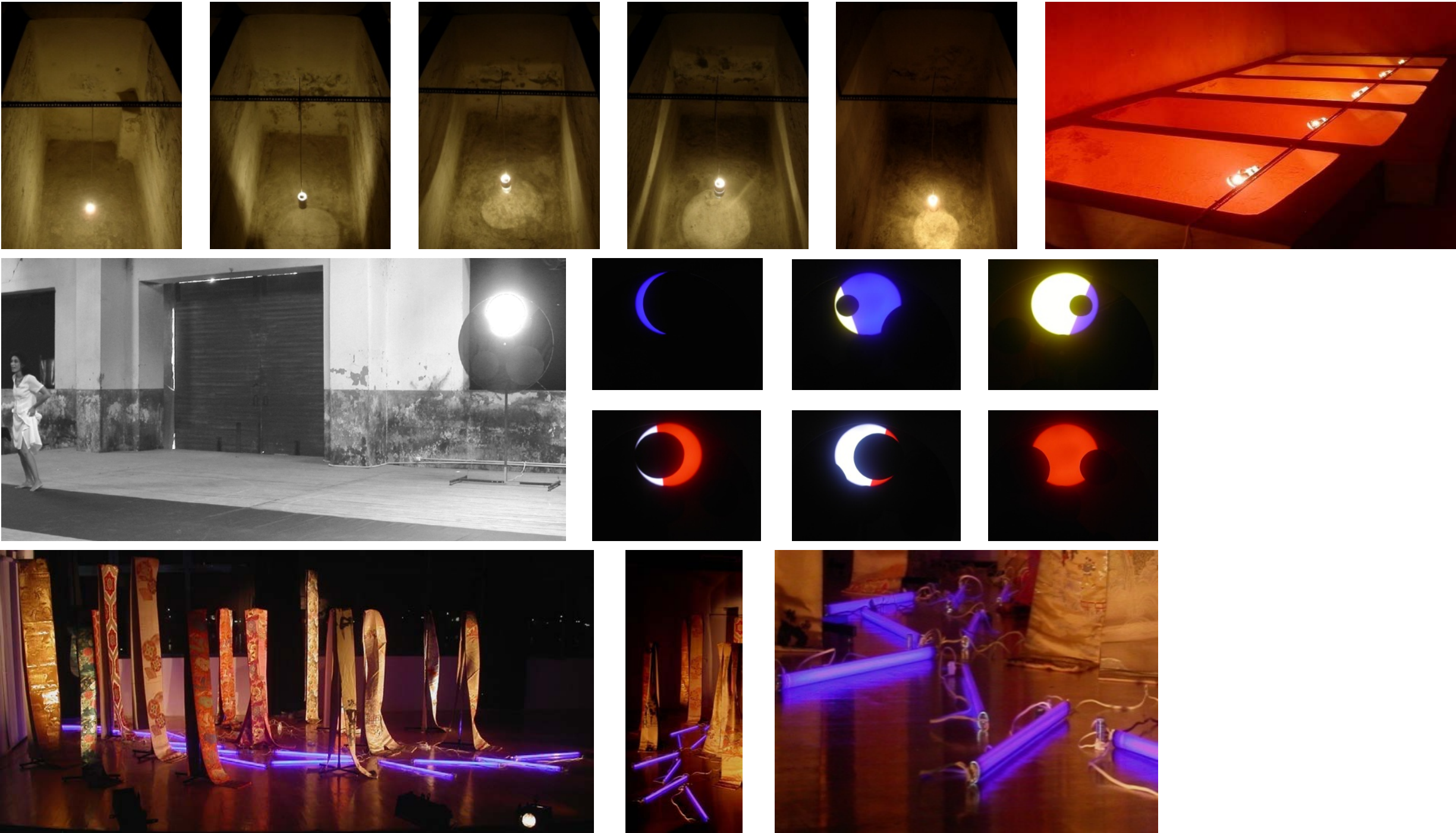
**Organisation:** Eugene Scourboutis

**Type:** Lighting design, art

**Date/Place:** 1997-2000, Athens, London

**Field:** Lighting design, installation art, theatre.

**Top row:** Photokinesis, light installation, ‘Space Intrigues’ Exhibition, 7<sup>th</sup> Summer Academy of National Theatre of Greece, Industrial Museum of Syros, 2006. Study of reflection (left), study of colour (right). **Middle row:** Proserpina, light installation, ‘Proserpina by Goethe’ event, Kathodos, 2<sup>nd</sup> Meeting of Ancient Drama, Sikyon, 2006. **Bottom row:** Utopian Landscapes, installation in collaboration with Damianos Zarifis and Vouvoula Skoura, 8<sup>th</sup> Summer Academy of the National Theatre of Greece, Artiria, Lefkas, 2007



**Title:** Miscellaneous Design and Make Projects

**Organisation:** Eugene Scourboutis

**Type:** Experimental design

**Date/Place:** 1997-2000, Athens, London

**Field:** Experimental design, material led design, found objects, lighting, craft and design.

**Clockwise from top left:** Photokinesis v4-Variable Reflector Uplighter 2000, Shipwreck, candle holder from reclaimed steel and wood 1997, Marble, light from marble and sea urchin shell, 2000, Plumber's Lamp, candle holder from copper tube and cannabis fibers 1997, 2 is a Company 3 is a Crowd' [x2] candleholder system from wood 2000, I-lamp [x2], floor light from steel 2000, Memory, side table from wood and glass, 2000





**Title:** Miscellaneous Preliminary Designs

**Organisation:** Eugene Scourboutis

**Type:** Experimental design

**Date/Place:** 2005-2007, Athens, London

**Field:** Product design, furniture design, preliminary design, CAD.

**Clockwise from top left:** Ima, wooden armchair, 2006, Duo, double sided sunglasses, 2005, Pressed, sheet metal radiator, 2006, Lungo, double espresso cup, 2006, Bifuhi, plywood armchair, 2005, Waterspace, water fountain, 2006, Athens bench, multifunctional, modular bench system, 2006.

