

# SALL: Design a system to Support Academics' Lifelong Learning



---

*S. Anastopoulou, M. Sharples*

*Educational Technology group*

*School of Electronic & Electrical Engineering*

*University of Birmingham*

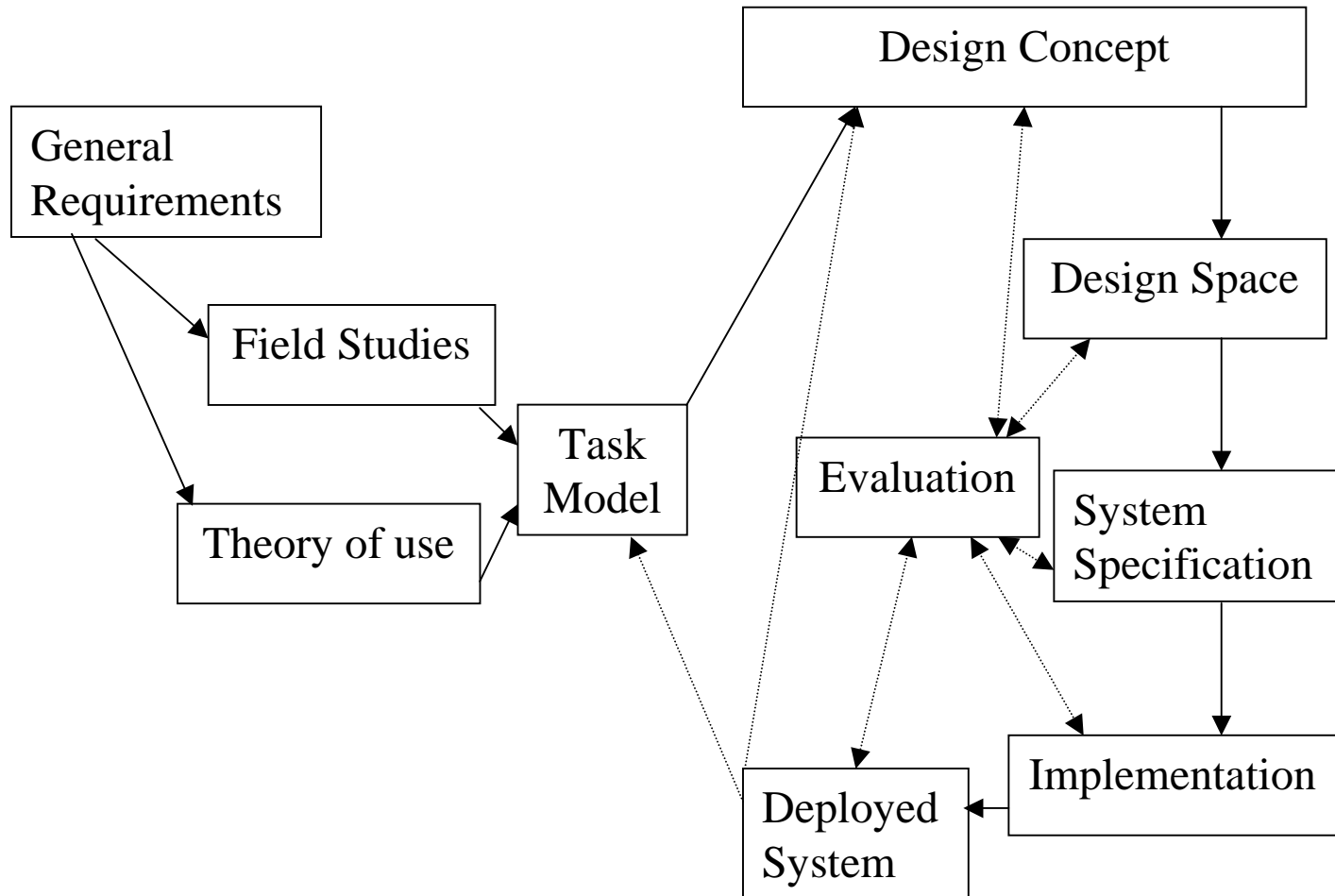


# Aims

---

- investigate **university academics'** learning processes and their difficulties
- specify which of those could be addressed by a learning support system
- create a design concept consistent with academics' cognition and learning
- specify the system
- define the design space (options & rationale)
- propose a scenario of use and evaluate it

# Methodology





# Task Model

---

Based on Field studies and Learning theories,  
we identified  
a way that technology can support academics

The focus is on learning that results from

- interactions-discussions
- finding field information (key-papers & people)
- establishment of e-societies
- presentation of information based on context



# Design Concept

---

- System Image

The *Conference* metaphor

- Supports discussions, field consortiums, rapid, contextualised and decontextualised learning
- But has predefined timetable, activities, duration

The *Symposium* metaphor

- Moves from formality to informality
- Refers to familiar terminology

- Style of interactions



# Design Concept

---

- Style of interactions

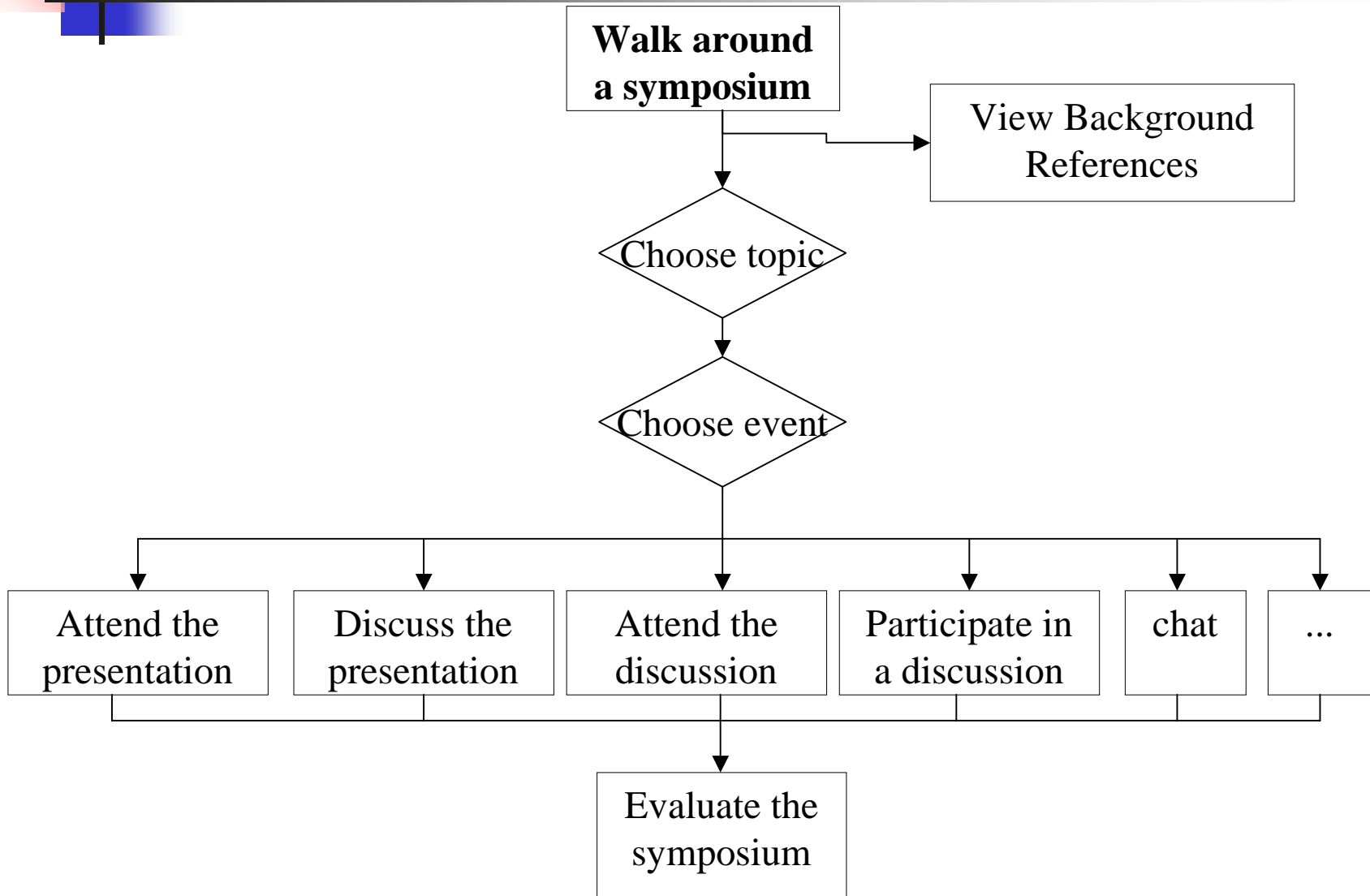
## Focal Points

- Discussions (formal and informal)
- Reading material e.g. references
- Field trips, lab-tours

## Less important:

- Rooms and other spatial oriented objects
- Duration and academics' participation times

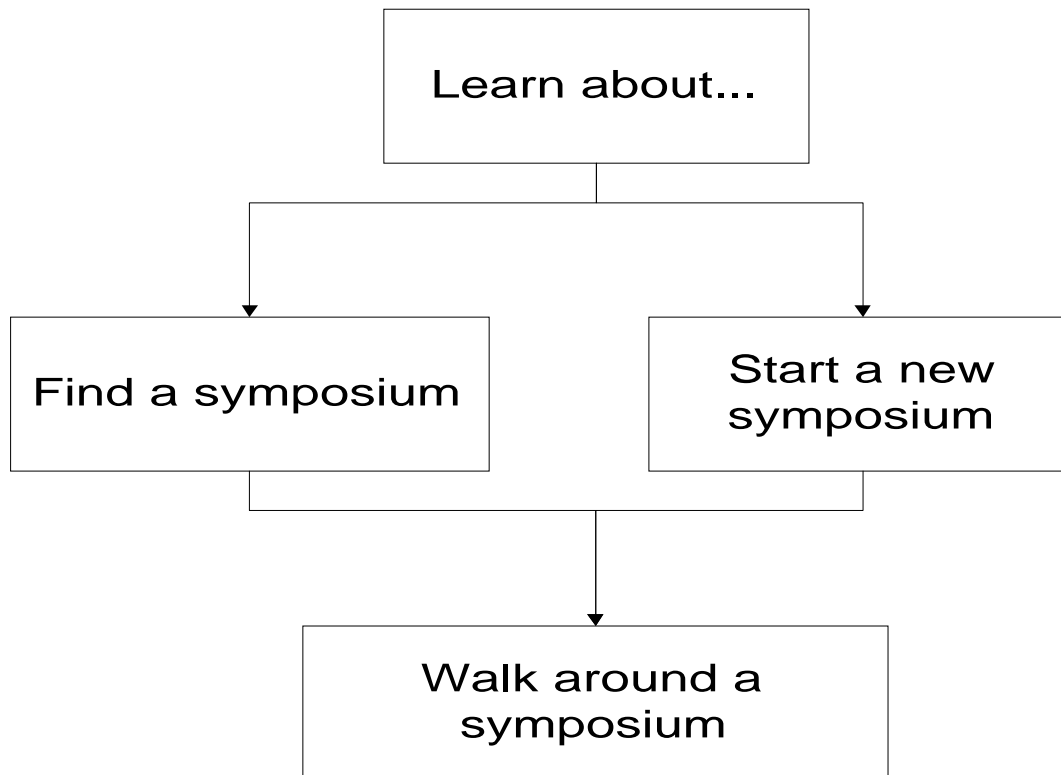
# Design Space & System Specification





# System Specification

---







# System Specification

---

- Start a new symposium
  - Specify disciplines
  - Choose/specify the keywords
  - Choose/specify the title
  - Specify session topics (optional)
  - People to be invited



# System Specification

---

- Find an existing symposium
  - Specify learning needs
    - Disciplines of interest
    - Relevant keywords
    - Possible words in the title
    - Possible session topics
    - Names of possible participants
  - Select a symposium from those suggested by the system

# Snapshot of SALL (1)



## SALL: Supporting Academics' Lifelong Learning

[EXIT](#)

List of  
Participant

Moderator:  
[G. Cilesis](#)

Audience:  
[A. Smith](#)  
[M. Costa](#)  
[Z. Fourier](#)

### 3. Walk around a symposium

[Click on a topic to explore the symposium material  
and/or to participate in running events]

**Title:** International Conference on Adaptive  
Hypermedia and Adaptive Web-Based  
Systems

**Topic 3:** Heuristic evaluation

**Event:** Discussion 'Smart Toys: Brave New World?'

Moderator: [G. Cilesis](#), [Discussion history](#)

**Last Message:** Posted 2 Days Ago by A. Smith

This is the Aroma Cafe, a haven for the tired and  
thirsty, and those in search of good conversation.  
Welcome, for fine teas and coffees, excellent  
donuts and pastries, and our unbeatable scrabble-  
playing blue Orangutan, Ook. Oh yes, and the life-  
like statue on the back porch.

[Reply](#)

[previous](#) [next](#)

### Walk around a Symposium

**Title:** International Conference  
on Adaptive Hypermedia and  
Adaptive Web-Based Systems

Topics:

1. Memory augmentation

2. Agents

3. Heuristic Evaluation

3.1 Paper Presentation  
& Discussion

3.2 Discussion

4. Multimodality

5. Wearable Computing

6. Design for all



Click on the names to see the profile. Click on 'Reply' button to participate to the  
discussion. Click on 'View discussion history' to view previous messages et al.  
Click on 'New Discussion' button to start a new one.

# Snapshot of SALL (2)



## SALL: Supporting Academics' Lifelong Learning

[EXIT](#)

Moderator's  
Profile

A. Cilesis  
Professor,  
Univ. of  
Piraeus,  
Greece  
[web-site](#)

[Publications](#)

[Cited by](#)

### 3. Walk around a symposium

[Click on a topic to explore the symposium material  
and/or to participate in running events]

**Title:** International Conference on Adaptive  
Hypermedia and Adaptive Web-Based  
Systems

**Topic 3:** Heuristic evaluation

**Event:** Discussion 'Smart Toys: Brave New World?'

Moderator: [G. Cilesis](#), [Discussion history](#)

**Last Message:** Posted 2 Days Ago by A. Smith

This is the Aroma Cafe, a haven for the tired and  
thirsty, and those in search of good conversation.  
Welcome, for fine teas and coffees, excellent  
donuts and pastries, and our unbeatable scrabble-  
playing blue Orangutan, Ook. Oh yes, and the life-  
like statue on the back porch.

[Reply](#)

[previous](#) [next](#)

### References

The Brave New World, X. Crave  
[www.h2q2.com](#)  
[useit.com](#)  
Human Computer Interaction, A. Dix

### Lists of Messages:

- 1 [Z. Fourier \(2 Days ago\)](#)
- 2 [M. Costa \(3 Days Ago\)](#)
- 3 [Y. Ciles \(4 Days Ago\)](#)
- 4 [Z. Fourier \(4 Days Ago\)](#)
- 5 [A. Smith \(5 Days Ago\)](#)

Write discussion's summary

Start a

[New\\_Discussion](#)





# Evaluation

---

- Informal Testings
- Formal Testings based on Heuristic Evaluation [Nielsen] & User testing technique [Shneiderman]



# Conclusion

---

- SALL's comparison with existing systems (e.g. [www.h2g2.com](http://www.h2g2.com), Colloquia)
  - focus
  - user group composition
  - profile specification
  - terminology
  - task-focused interface
- Future development:
  - full implementation
  - deployment



[http://www.eee.bham.ac.uk/et\\_gr/](http://www.eee.bham.ac.uk/et_gr/)

---

Thank you

Stamatina Anastopoulou